

50 Series End Mount

NEMA Frame Size 48C

Torque Ratings: 1.5 to 6 lb-ft

Instructions BK4618
Parts List
Troubleshooting

RoHS Compliant- Standard brakes meet the requirements of the Restriction of Hazardous Substances Directive

Specifications:

Reaction Time: 15-20 milliseconds (release and set)
AK: 3" Register
AJ: 3.75" Bolt Circle
Thermal Capacity: 4 HPS/MIN
Maximum RPM: 3600

Design Features:

Torque adjustable for specific applications
CSA Approved File #LR13814
Coil insulation: Class B Standard, Class H Optional
Spring set, electrically released
Deadman release (Model 2-50000-05A without release)
Splined hub
Through shaft knockout standard, all models

Enclosure Type:

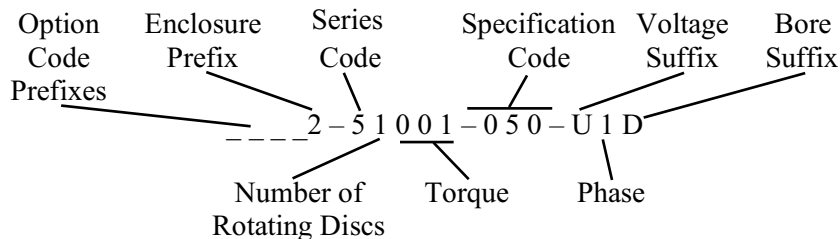
- ◆Dripproof Enclosure
- ◆NEMA 2, IP40
- ◆Steel cover and mounting bracket



Instructions & Parts Manual: BK4618

Torque lb-ft	Model # Internal lead connection	List Price Internal lead connection	Model # Internal / external lead connection	List Price Internal / external lead connection	Wt Lbs.	Inertia Wk ² lb-ft ²	Manual Release
1.5	2-51001-050	\$380	6-51001-080	\$410	7	0.002	Yes
3	2-51003-050	\$395	6-51003-080	\$420	7	0.002	Yes
6	2-51006-050	\$410	6-51006-080	\$440	7	0.002	Yes

Brake Model Number Definition



Standard Voltages (single phase only):

Suffix	Voltage
Y	110/220V, 50Hz
U	230/460V, 60 Hz or 190/380V, 50 Hz
R	115/230V, 60 Hz
T	220/440V, 60 Hz
P	575V, 60 Hz

Special voltages available.

Standard Hub Bore Sizes:

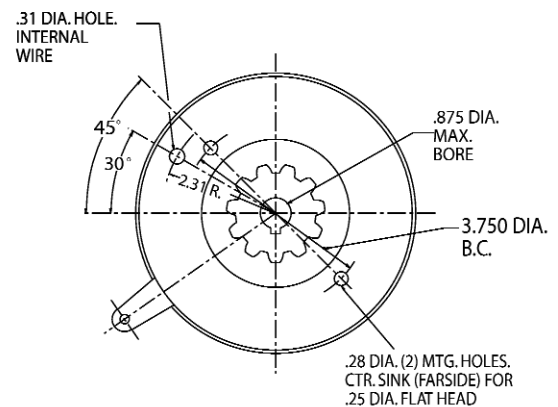
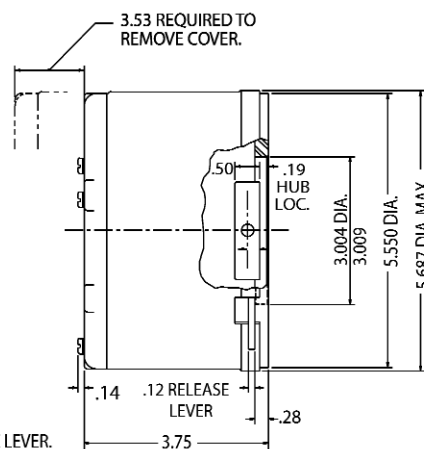
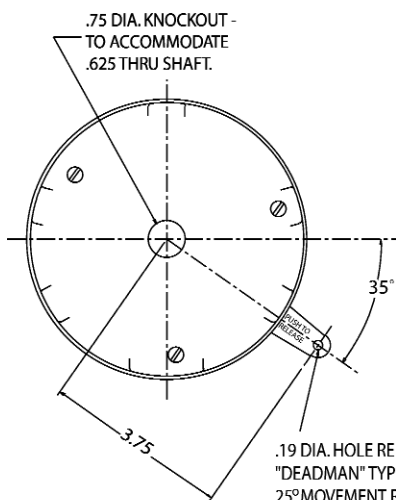
Suffix	Size	Keyway
C	1/2"	None
D	5/8"	3/16" x 3/32"
E	3/4"	3/16" x 3/32"
F	7/8"	3/16" x 3/32"

Special bore sizes available.

Available Options:

Option	Prefix
Adapter to Larger Frame Size(s)	A
Reverse Adapter	AB
Direct Current (DC Voltage)	DD
Tropical Protection	P
Class H Insulation	Q

Refer to pages 32-36 for option descriptions and pricing.



www.dingsbrakes.com