

# Hazardous Location Brakes

NEMA Frame Sizes 56C through 256TC

Torque Ratings: 1.5 to 75 lb. ft.

RoHS Compliance upon request- can be constructed to meet the requirements of the Restriction of Hazardous Substances Directive

**60 Series Instructions**  
**60 Series Parts List**  
**Troubleshooting / Wiring**  
**70 Series Instructions**  
**70 Series Parts List**  
**Troubleshooting / Wiring**

## Specifications:

### 60 Series

#### NEMA Frame Sizes 56C through 145TC

Reaction Time: 15-20 milliseconds (release and set)

AK: 4.5" Register

AJ: 5.88" Bolt Circle

Maximum RPM: 3600

### 70 Series

#### NEMA Frame Sizes 182TC through 256TC

Reaction Time: 20-25 milliseconds (release and set)

AK: 8.5" Register

AJ: 7.25" Bolt Circle

Maximum RPM: 3600

## Design Features:

Torque adjustable for specific applications

Splined hub

Coil insulation: Class B Std, Class H Optional (70 Series only)

Spring set, electrically released

## Enclosure Types:

### 60 Series

◆Cast iron cover and bracket 8-60000-66B

◆Cast aluminum cover and bracket 8-60000-67B

### 70 Series

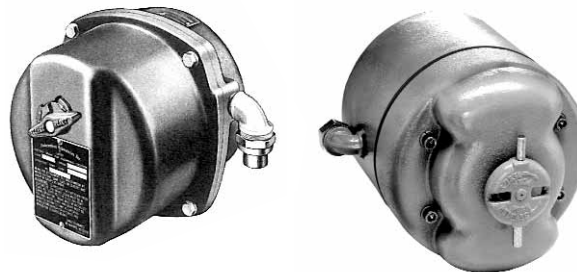
◆Cast iron cover and bracket R70000-9

## Certifications:

CSA File No. LR 19464

UL File No. E27811

Class I Group C and D, Class II Groups E, F, and G



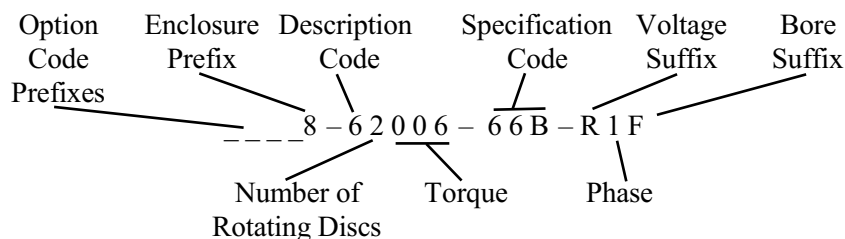
## Special Note:

Dings 60 and 70 Series Hazardous Location Brakes are equipped with a thermal overload release mechanism. When the external surface of the brake approaches the specified temperature limit, the mechanism will automatically release the brake and hold it in the released position. This prevents the surface temperature from rising to a level that could ignite surrounding gases or dust by releasing the brake and thereby stopping a further increase in temperature.

**Caution:** Once the brake has been released by the thermal overload mechanism, control over the rotation of the motors and movement of the load is lost. This uncontrolled rotation of the motor and movement of the load could cause injury to personnel and damage to property.

Dings 60 Series Hazardous Location Brakes are also equipped with a thermal switch. When properly wired into the motor starting circuit, the thermal switch shuts down the motor before the thermal overload mechanism releases the brake. When the thermal switch activates, it stops the motor and load, preventing the uncontrolled motion described in the "caution" above.

## Brake Model Number Definition



### Standard Hub Bore Sizes:

Suffix	Size	Keyway
C	1/2"	None
D	5/8"	3/16" x 3/32"
E	3/4"	3/16" x 3/32"
F	7/8"	3/16" x 3/32"
G	1"	3/16" x 3/32"
H	1 1/8"	1/4" x 1/8"
J	1 1/4"	1/4" x 1/8"
K	1 3/8"	5/16" x 5/32"
L	1 1/2"	3/8" x 3/16"
M	1 5/8"	3/8" x 3/16"

Special bore sizes available.

### Standard AC Voltages:

Suffix	Voltage
Y	110/220V, 50Hz
U	230/460V, 60 Hz or 190/380V, 50 Hz
R	115/230V, 60 Hz
T	220/440V, 60 Hz
P	575V, 60 Hz

Single phase only in 60 Series  
 Single and three phase in 70 Series  
 Special voltages available.

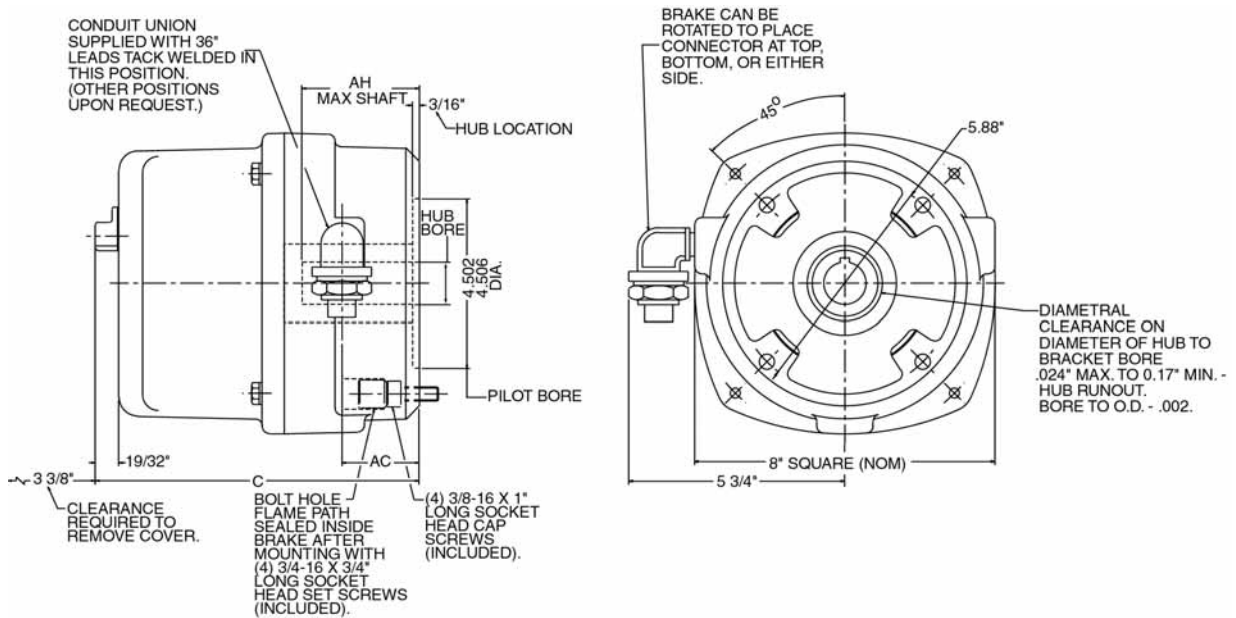
### Available Options:

Option	Prefix
Foot Mounting Bracket	F
Heavy-Duty Rotating Friction Disc with Hardened Steel Hub	H
Class H Insulation (70 Series only)	Q
Internal Space Heater (70 Series only)	R
Vertical Mounting	
Vertical Over, or above motor	VO
Vertical Under, or below motor	VU

Refer to pages 26-30 for option descriptions and pricing.

**60 Series**

Torque lb.ft.	Model #	Instruction and Parts Manual	Construction	Wt. Lbs.	Thermal Capacity HPS/MIN	Inertia WK <sup>2</sup> Lb.Ft. <sup>2</sup>	Dimensions				List Price
							C	AH		AC	
								Max.	Min.		
1.5	8-61001-66B	BK4614	Cast Iron	42	6	0.020	7 15/16	2 3/8	1 3/4	2 1/16	\$2,330
	8-61001-67B	BK4614	Cast Aluminum	24	6	0.020	7 15/16	2 3/8	1 3/4	2 1/16	\$2,330
3	8-61003-66B	BK4614	Cast Iron	42	6	0.020	7 15/16	2 3/8	1 3/4	2 1/16	\$2,450
	8-61003-67B	BK4614	Cast Aluminum	24	6	0.020	7 15/16	2 3/8	1 3/4	2 1/16	\$2,450
6	8-62006-66B	BK4614	Cast Iron	44	6	0.030	8 5/16	2 3/4	2	2 7/16	\$2,590
	8-62006-67B	BK4614	Cast Aluminum	25	6	0.030	8 5/16	2 3/4	2	2 7/16	\$2,590
10	8-63010-66B	BK4614	Cast Iron	47	6	0.040	8 11/16	3 1/8	2 1/4	2 13/16	\$2,795
	8-63010-67B	BK4614	Cast Aluminum	27	6	0.040	8 11/16	3 1/8	2 1/4	2 13/16	\$2,795
15	8-63015-66B	BK4614	Cast Iron	47	6	0.040	8 11/16	3 1/8	2 1/4	2 13/16	\$2,915
	8-63015-67B	BK4614	Cast Aluminum	27	6	0.040	8 11/16	3 1/8	2 1/4	2 13/16	\$2,915



**70 Series**

Torque lb.ft.	Model #	Instruction and Parts Manual	Construction	Wt. Lbs.	Thermal Capacity HPS/MIN	Inertia WK <sup>2</sup> Lb.Ft. <sup>2</sup>	Dimensions				List Price
							C	AH		AC	
								Max.	Min.		
10	R71010-9	BK4606	Cast Iron	69	10	0.035	10 5/8	3 7/16	2 3/8	3 13/32	\$3,350
15	R71015-9	BK4606	Cast Iron	69	10	0.035	10 5/8	3 7/16	2 3/8	3 13/32	\$3,500
25	R72025-9	BK4606	Cast Iron	74	11	0.076	11 1/4	3 3/4	2 5/8	4 1/32	\$3,725
35	R73035-9	BK4606	Cast Iron	79	12	0.102	11 7/8	4 3/8	3	4 21/32	\$4,000
50	R74050-9	BK4606	Cast Iron	84	13	0.130	12 1/2	5 1/8	3 1/2	5 9/32	\$4,700
75	R75075-9	BK4606	Cast Iron	84	13	0.115	12 1/2	5 1/8	3 1/2	5 9/32	\$5,700

