

# 80 Series End Mount

## 2 Post Design & Heavy Duty 4 Post

**Instructions 2 Post : Nema 2 or Nema 4**  
**Parts List 2 Post: Nema 2 or Nema 4**  
**Instructions 4 Post: Nema 2 or Nema 4**  
**Parts List 4 Post: Nema 2 or Nema 4**

**Troubleshooting  
Wiring**

**NEMA Frame Sizes 284TC and 286TC**  
**Torque Ratings: 25 to 175 lb. ft.**

RoHS Compliance upon request- can be constructed to meet the requirements of the Restriction of Hazardous Substances Directive

**No  
Disassembly  
Required for  
Mounting!**



### Specifications:

Reaction Time: 20-25 milliseconds (release and set)  
 AK: 10.5" Register  
 AJ: 9.00" Bolt Circle  
 Maximum RPM: 2400

### Design Features:

2 Post Design for standard applications  
 HEAVY DUTY 4 Post Design for high cycle/ jogging  
 No disassembly required for mounting  
 Direct acting design with no linkages to break  
 One moving part for longer life  
 Torque adjustable for specific applications  
 Splined hub  
 Coil insulation: Class B Standard, Class H Optional  
 Spring set, electrically released  
 Lead wires for conduit connections (internal connection available)  
 Manual release, automatic reset  
 CSA Approved File #LR13814

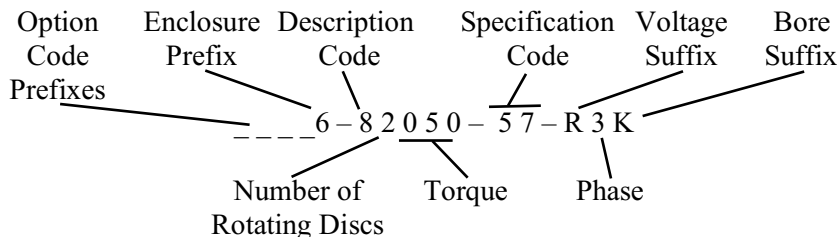
### Enclosure Types:

- ◆Dripproof Enclosure: NEMA 2, CSA 2, IP41
  - ◆Stamped steel cover with cast iron bracket or cast aluminum cover with cast iron bracket
- ◆Waterproof/Dusttight Enclosure: NEMA 4, CSA 4, IP56
  - ◆Also available without hub seal for non-TEFC applications  
4 post model only 4-80000-32
  - ◆Cast iron cover and bracket

### Instruction & Parts Manual:

2 Post NEMA 2: BK4803; NEMA 4: BK4813  
 4 Post NEMA 2: BK4804; NEMA 4: BK4814

### Brake Model Number Definition



Standard AC Voltages (single and three phase):	
Suffix	Voltage
Y	110/220V, 50Hz
U	230/460V, 60 Hz or 190/380V, 50 Hz
R	115/230V, 60 Hz
T	220/440V, 60 Hz
P	575V, 60 Hz

Special voltages available.

Standard Hub Bore Sizes:		
Suffix	Size	Keyway
F	7/8"	3/16" x 3/32"
H	1 1/8"	1/4" x 1/8"
J	1 1/4"	1/4" x 1/8"
K	1 3/8"	5/16" x 5/32"
M	1 5/8"	3/8" x 3/16"
N	1 7/8"	1/2" x 1/4"

Special bore sizes available.

Available Options:	Prefix
Adapter to Larger Frame Size(s)	A
Reverse Adapter	AB
Ductile Iron Stationary Disc	E
Foot Mounting Bracket	F
Heavy-Duty Rotating Friction Disc with Hardened Steel Hub	H
High Tensile Studs	J
Marine Duty	M
Harsh Environment Protection	N
Tropical Protection	P
Internal Space Heater	R
Stainless Steel Stationary Disc	S
Through Shaft	T
Class H Insulation	Q
Vertical Mounting	
Vertical Over, or above motor	VO
Vertical Under, or below motor	VU
Micro-Switch Warning	XS

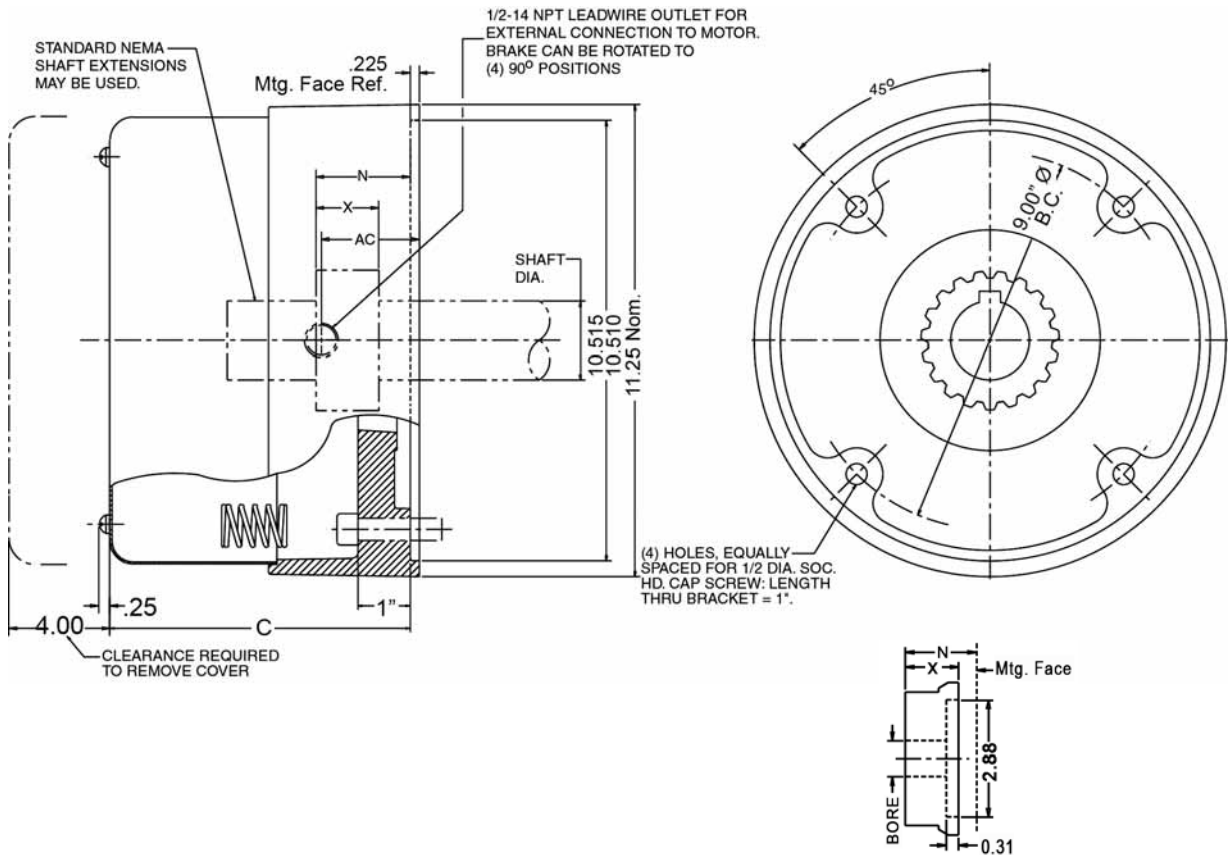
Refer to pages 26-30 for option descriptions and pricing.

# 2 Post Design

## Instruction & Parts Manual:

NEMA 2: BK4803; NEMA 4: BK4813

Torque lb.ft.	2 POST Model No.	Enclosure	Construction	Wt. Lbs.	Thermal Capacity HPS/Min	Inertia WK <sup>2</sup> Lb.Ft. <sup>2</sup>	Dimensions				List Price
							C	N	X	AC	
<b>25</b>	6-81025-57	NEMA 2	Cast Iron/Steel	57	15	0.084	6.25	1.75	1.00	1.73	\$1,500
	R81025	NEMA 2	Cast Iron/Aluminum	60	15	0.084	6.00	1.75	1.00	1.73	\$1,600
	R81025-4	NEMA 4	Cast Iron	75	15	0.095	6.00	1.75	1.31	1.73	\$1,840
<b>35</b>	6-81035-57	NEMA 2	Cast Iron/Steel	57	15	0.084	6.25	1.75	1.00	1.73	\$1,550
	R81035	NEMA 2	Cast Iron/Aluminum	60	15	0.084	6.00	1.75	1.00	1.73	\$1,650
	R81035-4	NEMA 4	Cast Iron	75	15	0.095	6.00	1.75	1.31	1.73	\$1,950
<b>50</b>	6-82050-57	NEMA 2	Cast Iron/Steel	65	17	0.158	6.87	2.25	1.50	2.35	\$1,600
	R82050	NEMA 2	Cast Iron/Aluminum	68	17	0.158	6.62	2.25	1.50	2.35	\$1,700
	R82050-4	NEMA 4	Cast Iron	83	17	0.169	6.62	2.25	1.81	2.35	\$2,200
<b>70</b>	6-82070-57	NEMA 2	Cast Iron/Steel	65	17	0.158	6.87	2.25	1.50	2.35	\$1,850
	R82070	NEMA 2	Cast Iron/Aluminum	68	17	0.158	6.62	2.25	1.50	2.35	\$1,950
	R82070-4	NEMA 4	Cast Iron	83	17	0.169	6.62	2.25	1.81	2.35	\$2,600
<b>75</b>	6-83075-57	NEMA 2	Cast Iron/Steel	70	19	0.233	7.50	2.75	2.00	2.98	\$2,100
	R83075	NEMA 2	Cast Iron/Aluminum	73	19	0.233	7.25	2.75	2.00	2.98	\$2,200
	R83075-4	NEMA 4	Cast Iron	88	19	0.244	7.25	2.75	2.31	2.98	\$2,700
<b>105</b>	6-83105-57	NEMA 2	Cast Iron/Steel	70	19	0.233	7.50	2.75	2.00	2.98	\$2,580
	R83105	NEMA 2	Cast Iron/Aluminum	74	19	0.233	7.25	2.75	2.00	2.98	\$2,680
	R83105-4	NEMA 4	Cast Iron	88	19	0.244	7.25	2.75	2.31	2.98	\$3,400
<b>125</b>	See 4-post brake; following pages										
<b>175</b>	See 4-post brake; following pages										



NEMA 4 Hub with seal

# 80 Series End Mount (Continued)

## 2 Post Design & Heavy Duty 4 Post

NEMA Frame Sizes 284TC and 286TC  
Torque Ratings: 25 to 175 lb. ft.

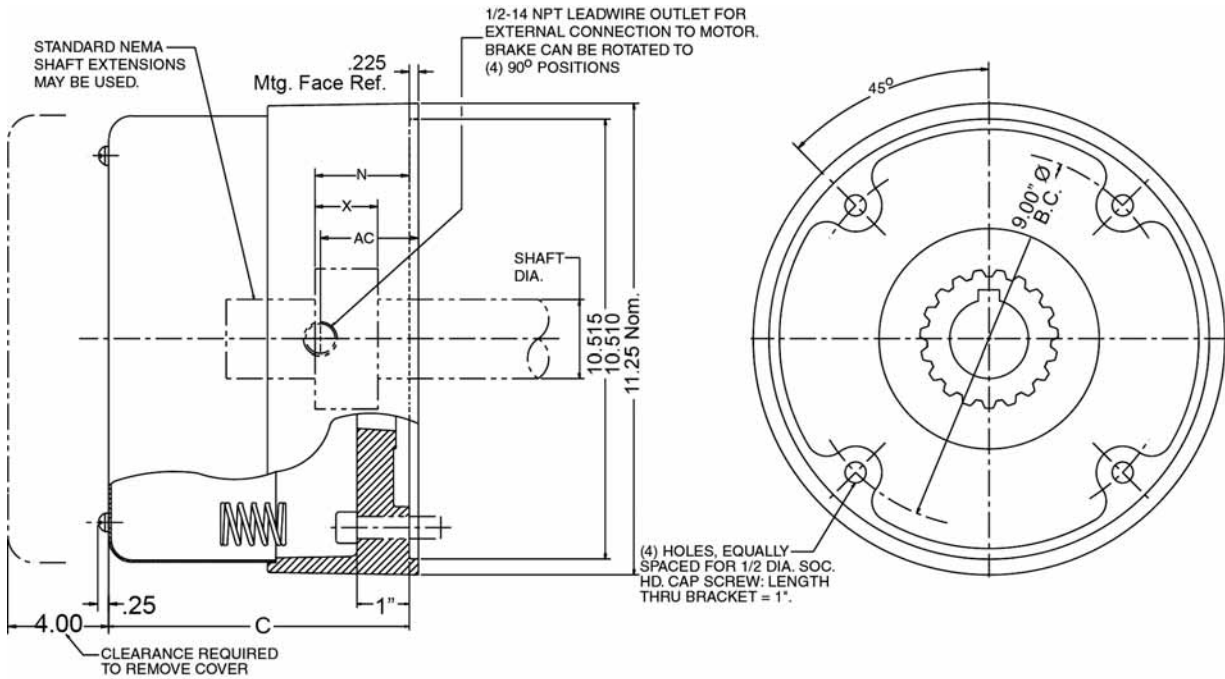
RoHS Compliance upon request- can be constructed  
to meet the requirements of the Restriction of  
Hazardous Substances Directive

**No  
Disassembly  
Required for  
Mounting!**

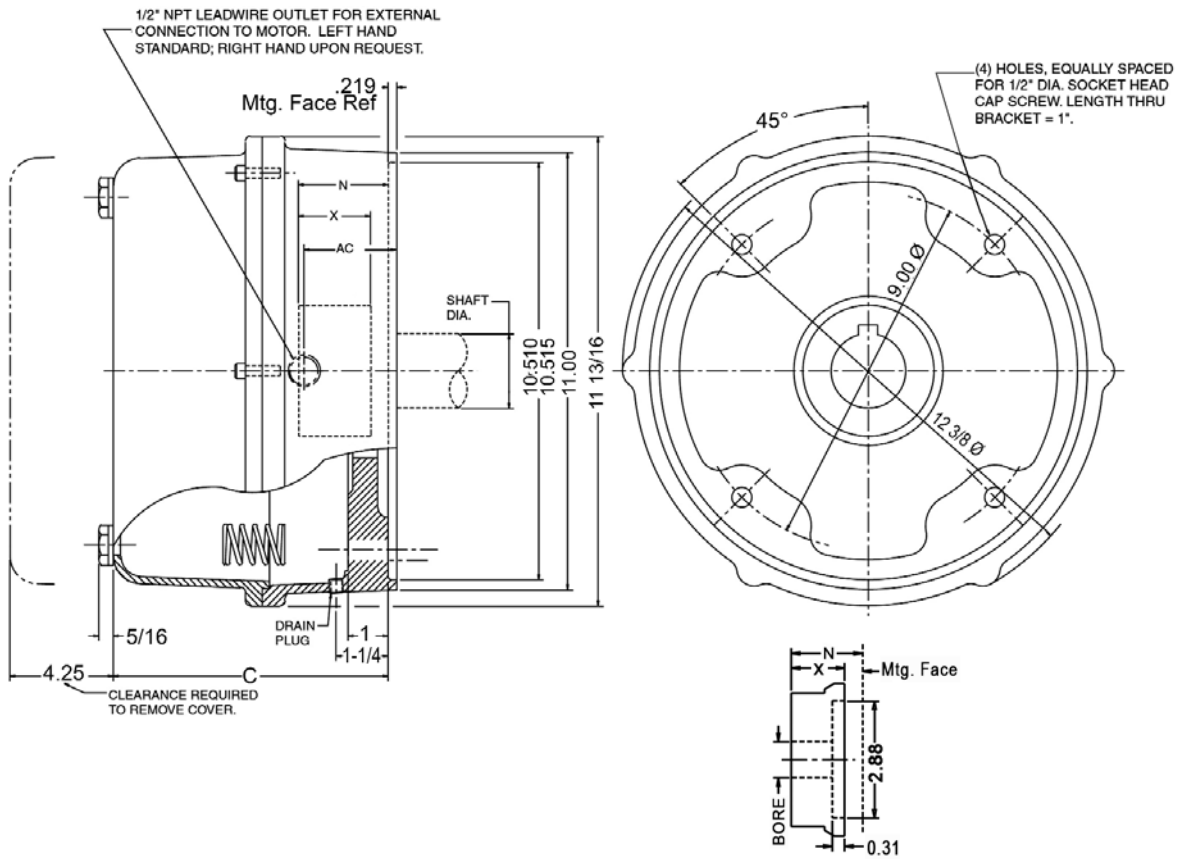
## Heavy Duty 4 Post Design Instruction & Parts Manual: NEMA 2: BK4804; NEMA 4: BK4814

Torque lb.ft.	Heavy Duty 4 POST Model No.	Enclosure	Construction	Wt. Lbs.	Thermal Capacity HPS/Min	Inertia WK <sup>2</sup> Lb.Ft. <sup>2</sup>	Dimensions				List Price
							C	N	X	AC	
<b>25</b>	6-81025-58	NEMA 2	Cast Iron/Steel	57	15	0.084	6.25	1.75	1.00	1.73	\$1,750
	2-81025-28	NEMA 2	Cast Iron/Aluminum	60	15	0.084	6.31	1.75	1.00	1.73	\$1,830
	4-81025-29	NEMA 4	Cast Iron	75	15	0.095	6.34	1.75	1.31	1.73	\$2,090
<b>35</b>	6-81035-58	NEMA 2	Cast Iron/Steel	57	15	0.084	6.25	1.75	1.00	1.73	\$1,800
	2-81035-28	NEMA 2	Cast Iron/Aluminum	60	15	0.084	6.31	1.75	1.00	1.73	\$1,880
	4-81035-29	NEMA 4	Cast Iron	75	15	0.095	6.34	1.75	1.31	1.73	\$2,200
<b>50</b>	6-82050-58	NEMA 2	Cast Iron/Steel	65	17	0.158	6.87	2.25	1.50	2.35	\$1,850
	2-82050-28	NEMA 2	Cast Iron/Aluminum	68	17	0.158	6.94	2.25	1.50	2.35	\$1,930
	4-82050-29	NEMA 4	Cast Iron	83	17	0.169	6.96	2.25	1.81	2.35	\$2,450
<b>70</b>	6-82070-58	NEMA 2	Cast Iron/Steel	65	17	0.158	6.87	2.25	1.50	2.35	\$2,100
	2-82070-28	NEMA 2	Cast Iron/Aluminum	68	17	0.158	6.94	2.25	1.50	2.35	\$2,180
	4-82070-29	NEMA 4	Cast Iron	83	17	0.169	6.96	2.25	1.81	2.35	\$2,850
<b>75</b>	6-83075-58	NEMA 2	Cast Iron/Steel	70	19	0.233	7.50	2.75	2.00	2.98	\$2,350
	2-83075-28	NEMA 2	Cast Iron/Aluminum	73	19	0.233	7.56	2.75	2.00	2.98	\$2,430
	4-83075-29	NEMA 4	Cast Iron	88	19	0.244	7.59	2.75	2.31	2.98	\$2,950
<b>105</b>	6-83105-58	NEMA 2	Cast Iron/Steel	70	19	0.233	7.50	2.75	2.00	2.98	\$2,830
	2-83105-28	NEMA 2	Cast Iron/Aluminum	74	19	0.233	7.56	2.75	2.00	2.98	\$2,910
	4-83105-29	NEMA 4	Cast Iron	88	19	0.244	7.59	2.75	2.31	2.98	\$3,650
<b>125</b>	6-84125-58	NEMA 2	Cast Iron/Steel	75	21	0.307	8.12	3.25	2.50	3.60	\$3,300
	2-84125-28	NEMA 2	Cast Iron/Aluminum	79	21	0.307	8.19	3.25	2.50	3.60	\$3,380
	4-84125-29	NEMA 4	Cast Iron	93	21	0.318	8.21	3.25	2.81	3.60	\$4,050
<b>175</b>	6-85175-58	NEMA 2	Cast Iron/Steel	81	21	0.384	8.75	3.87	3.12	4.23	\$4,300
	2-85175-28	NEMA 2	Cast Iron/Aluminum	85	21	0.384	8.81	3.87	3.12	4.23	\$4,380
	4-85175-29	NEMA 4	Cast Iron	99	21	0.395	8.84	3.87	3.44	4.23	\$5,750

## NEMA 2 Cast Iron/Steel



## NEMA 2 Cast Iron/Aluminum, & NEMA 4 Cast Iron



NEMA 4 Hub with seal