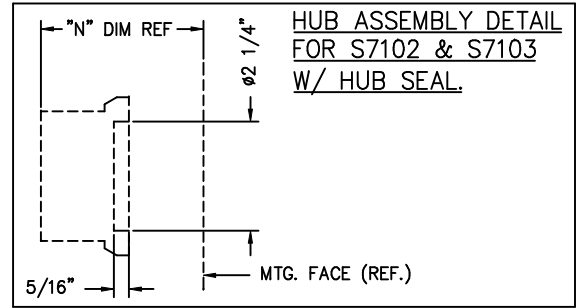
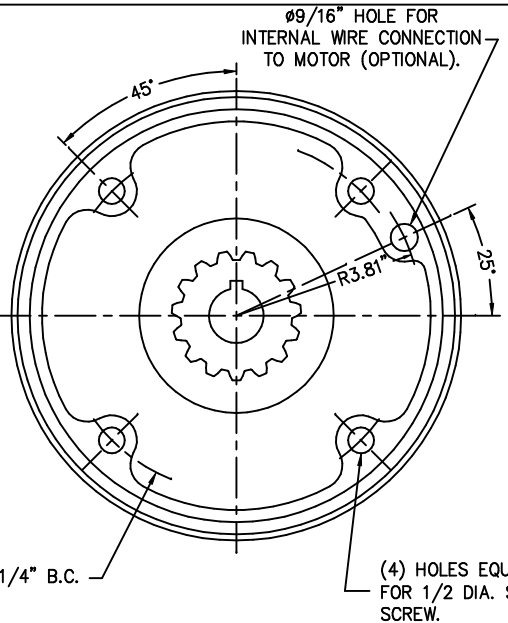
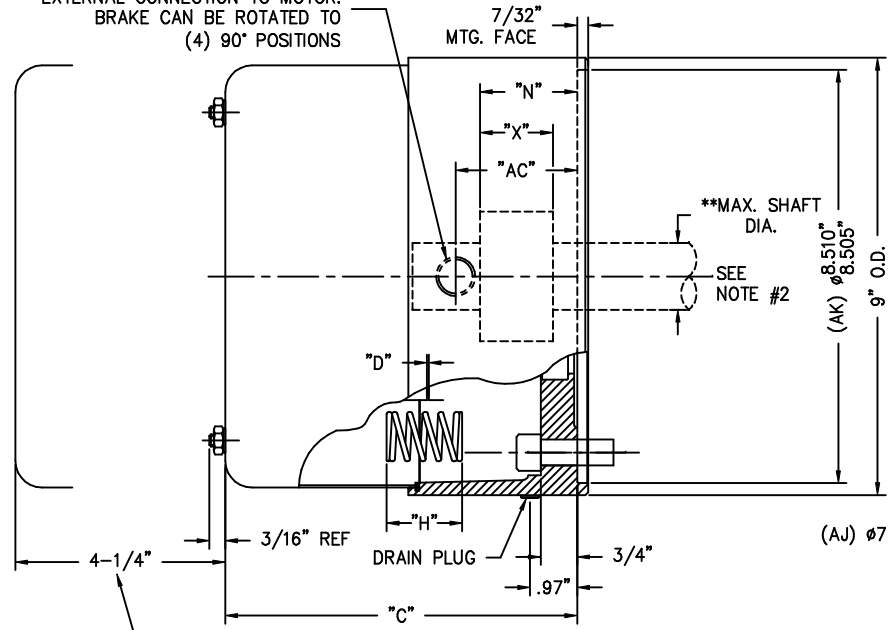


1/2" NPT LEAD OUTLET FOR EXTERNAL CONNECTION TO MOTOR. BRAKE CAN BE ROTATED TO (4) 90° POSITIONS



CLEARANCE REQUIRED TO REMOVE COVER.

NOTE #1:
*FOR S7100 & S7101, DIMENSIONS "N", "AC" & "C" INCLUDE THICKNESS OF MTG. FACE GASKET. (MTG. FACE GASKET NOT SHOWN IN OUTLINE.)

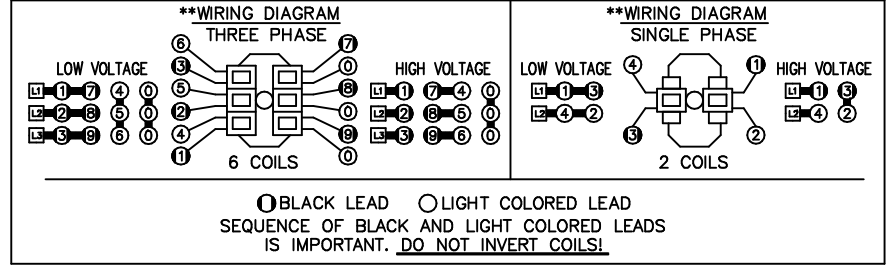
NOTE #2:
THE MAXIMUM SHAFT DIAMETER FOR THIS BRAKE IS 1-5/8". FOR ANY GIVEN SHAFT UP TO AND INCLUDING THIS DIAMETER, STANDARD NEMA SHAFT LENGTHS MAY HAVE TO BE SHORTENED.
** CONSULT FACTORY FOR SPECIFIC DETAILS.

SYMBOL KEY:

- "C" = ENCLOSURE LENGTH
- "D" = MAGNET AIR GAP
- "H" = INSTALLED SPRING LENGTH
- "N" = HUB LOCATION DIMENSION
- "X" = OVERALL HUB LENGTH
- "AC" = EXTERNAL WIRING OUTLET DIMENSION

(4) HOLES EQUALLY SPACED, FOR 1/2 DIA. SOC. HD. CAP SCREW.

**SEE BULLETIN BK4713 FOR OPERATING, INSTALLATION AND PARTS INSTRUCTIONS



2 POST NEMA 4 HSG. W/O HUB SEAL	TORQUE LB.FT.	No. OF ROTATING FRICTION DISCS	DIMENSIONS						BRACKET MATERIAL	COVER MATERIAL	
			"C"*	"D" ±.005		"H"	"N" ±1/32	"X"			"AC"*
				MAX.	ORIGINAL SETTING						
4-71010-101	10	1	6.08	.060	.035	1.31	1.53	1.00	1.28	CAST IRON	STAMP STEEL
4-71015-101	15	1	6.08	.060	.035	1.31	1.53	1.00	1.28	CAST IRON	STAMP STEEL
4-72025-101	25	2	6.71	.060	.035	1.31	2.03	1.50	1.91	CAST IRON	STAMP STEEL
4-72035-101	35	2	6.71	.065	.040	1.22	2.03	1.50	1.91	CAST IRON	STAMP STEEL
4-73050-101	50	3	7.33	.065	.040	1.25	2.53	2.00	2.53	CAST IRON	STAMP STEEL
4-74075-101	75	4	7.96	.065	.040	1.20	3.03	2.50	3.16	CAST IRON	STAMP STEEL

2 POST NEMA 4 HSG. W/HUB SEAL	TORQUE LB.FT.	No. OF ROTATING FRICTION DISCS	DIMENSIONS						BRACKET MATERIAL	COVER MATERIAL	
			"C"	"D" ±.005		"H"	"N" ±1/32	"X"			"AC"
				MAX.	ORIGINAL SETTING						
4-71010-103	10	1	6.05	.060	.035	1.31	1.50	1.31	1.25	CAST IRON	STAMP STEEL
4-71015-103	15	1	6.05	.060	.035	1.31	1.50	1.31	1.25	CAST IRON	STAMP STEEL
4-72025-103	25	2	6.68	.060	.035	1.31	2.00	1.81	1.88	CAST IRON	STAMP STEEL
4-72035-103	35	2	6.68	.065	.040	1.22	2.00	1.81	1.88	CAST IRON	STAMP STEEL
4-73050-103	50	3	7.30	.065	.040	1.25	2.50	2.31	2.50	CAST IRON	STAMP STEEL
4-74075-103	75	4	7.93	.065	.040	1.20	3.00	2.81	3.13	CAST IRON	STAMP STEEL

4 POST NEMA 4 HSG. W/O HUB SEAL	TORQUE LB.FT.	No. OF ROTATING FRICTION DISCS	DIMENSIONS						BRACKET MATERIAL	COVER MATERIAL	
			"C"*	"D" ±.005		"H"	"N" ±1/32	"X"			"AC"*
				MAX.	ORIGINAL SETTING						
4-71010-100	10	1	6.08	.060	.035	1.31	1.53	1.00	1.28	CAST IRON	STAMP STEEL
4-71015-100	15	1	6.08	.060	.035	1.31	1.53	1.00	1.28	CAST IRON	STAMP STEEL
4-72025-100	25	2	6.71	.060	.035	1.31	2.03	1.50	1.91	CAST IRON	STAMP STEEL
4-72035-100	35	2	6.71	.065	.040	1.22	2.03	1.50	1.91	CAST IRON	STAMP STEEL
4-73050-100	50	3	7.33	.065	.040	1.25	2.53	2.00	2.53	CAST IRON	STAMP STEEL
4-74075-100	75	4	7.96	.065	.040	1.20	3.03	2.50	3.16	CAST IRON	STAMP STEEL

4 POST NEMA 4 HSG. W/HUB SEAL	TORQUE LB.FT.	No. OF ROTATING FRICTION DISCS	DIMENSIONS						BRACKET MATERIAL	COVER MATERIAL	
			"C"	"D" ±.005		"H"	"N" ±1/32	"X"			"AC"
				MAX.	ORIGINAL SETTING						
4-71010-102	10	1	6.05	.060	.035	1.31	1.50	1.31	1.25	CAST IRON	STAMP STEEL
4-71015-102	15	1	6.05	.060	.035	1.31	1.50	1.31	1.25	CAST IRON	STAMP STEEL
4-72025-102	25	2	6.68	.060	.035	1.31	2.00	1.81	1.88	CAST IRON	STAMP STEEL
4-72035-102	35	2	6.68	.065	.040	1.22	2.00	1.81	1.88	CAST IRON	STAMP STEEL
4-73050-102	50	3	7.30	.065	.040	1.25	2.50	2.31	2.50	CAST IRON	STAMP STEEL
4-74075-102	75	4	7.93	.065	.040	1.20	3.00	2.81	3.13	CAST IRON	STAMP STEEL

THIS MATERIAL IS PROPERTY OF DUNLOP COMPANY. NO RIGHTS ARE GRANTED TO USE THIS MATERIAL FOR ANY PURPOSE OTHER THAN (1) PRODUCT EVALUATION OR MAINTENANCE OR (2) THE FURNISHING OF SERVICES AND SUPPLIES TO THE DUNLOP COMPANY.

OUTLINE DWG. 70 SERIES ENDMOUNT, NEMA 4 W/DEEP DRAWN COVER (S7100, S7101, S7102, S7103)

TOLERANCE UNLESS OTHERWISE NOTED

DATE: 06/28/06

SCALE: 3/4"=1"

DUNLOP DYNAMICS

REV: 1

CAE/LE: L070423

L070423