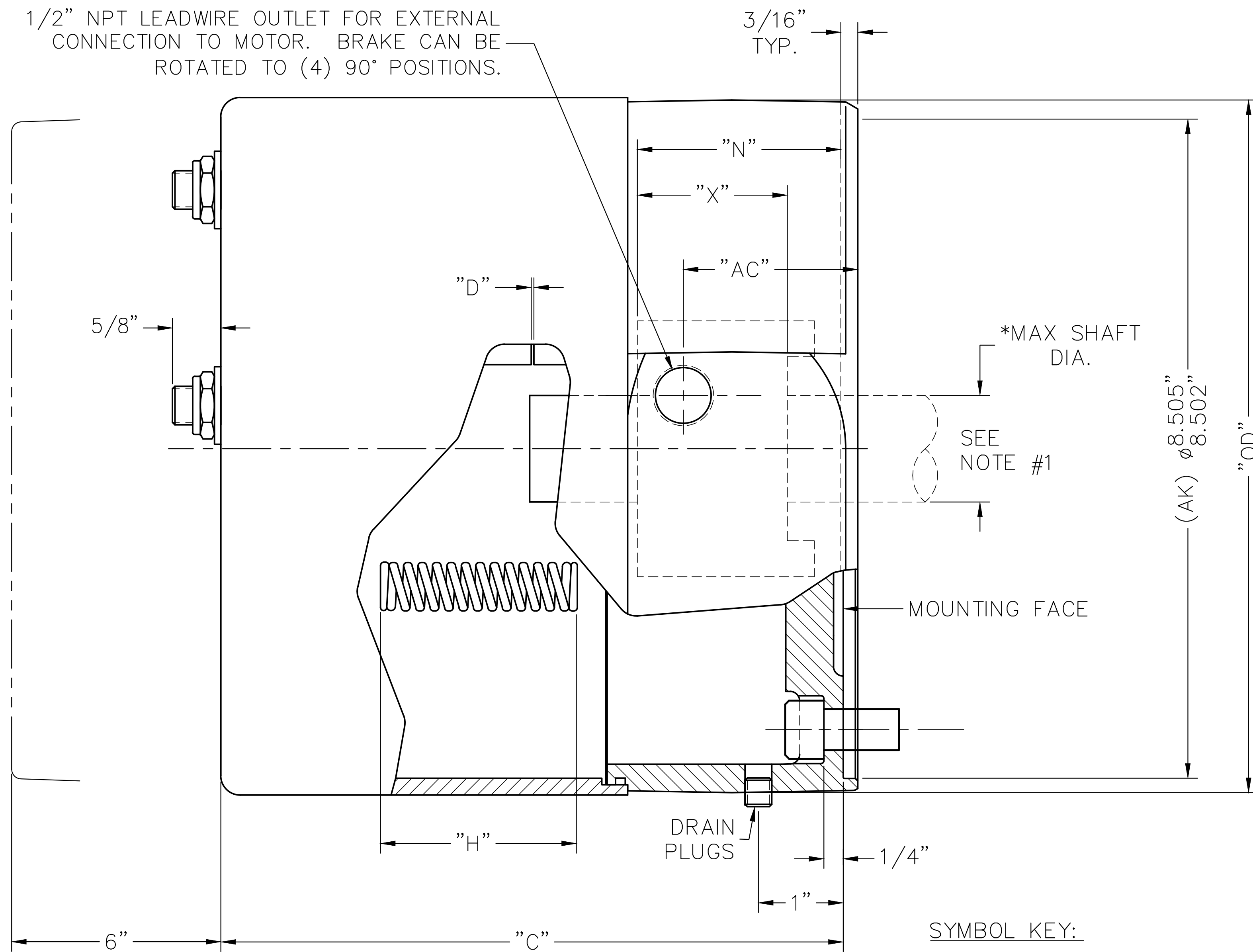


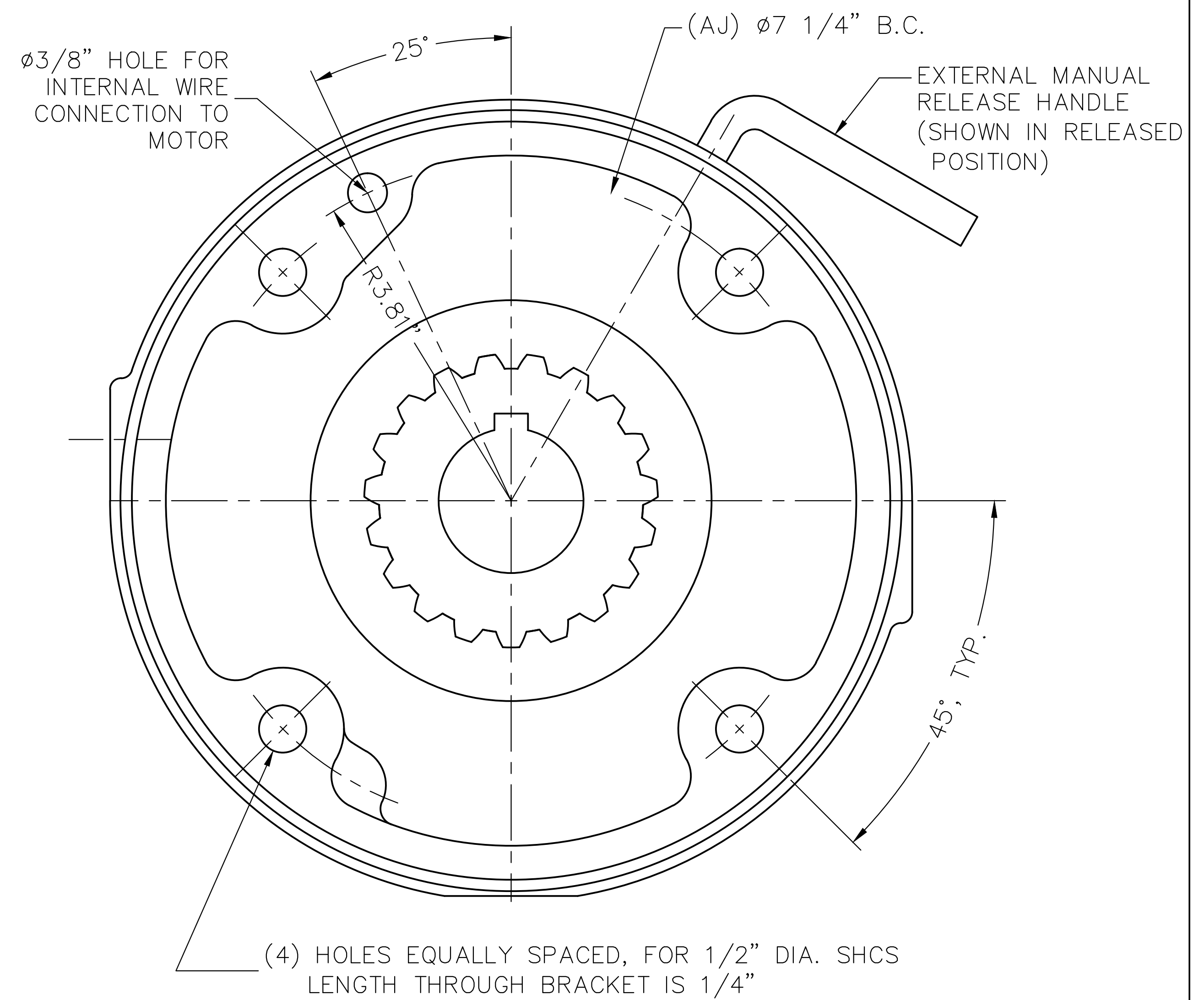
1/2" NPT LEADWIRE OUTLET FOR EXTERNAL CONNECTION TO MOTOR. BRAKE CAN BE ROTATED TO (4) 90° POSITIONS.



NOTE #1:  
THE MAXIMUM SHAFT DIAMETER FOR THIS BRAKE IS  $\phi 1-5/8$ " WITH STANDARD KEYWAY. MINIMUM (OR PILOT BORE) DIAMETER IS  $\phi 3/4$ ".

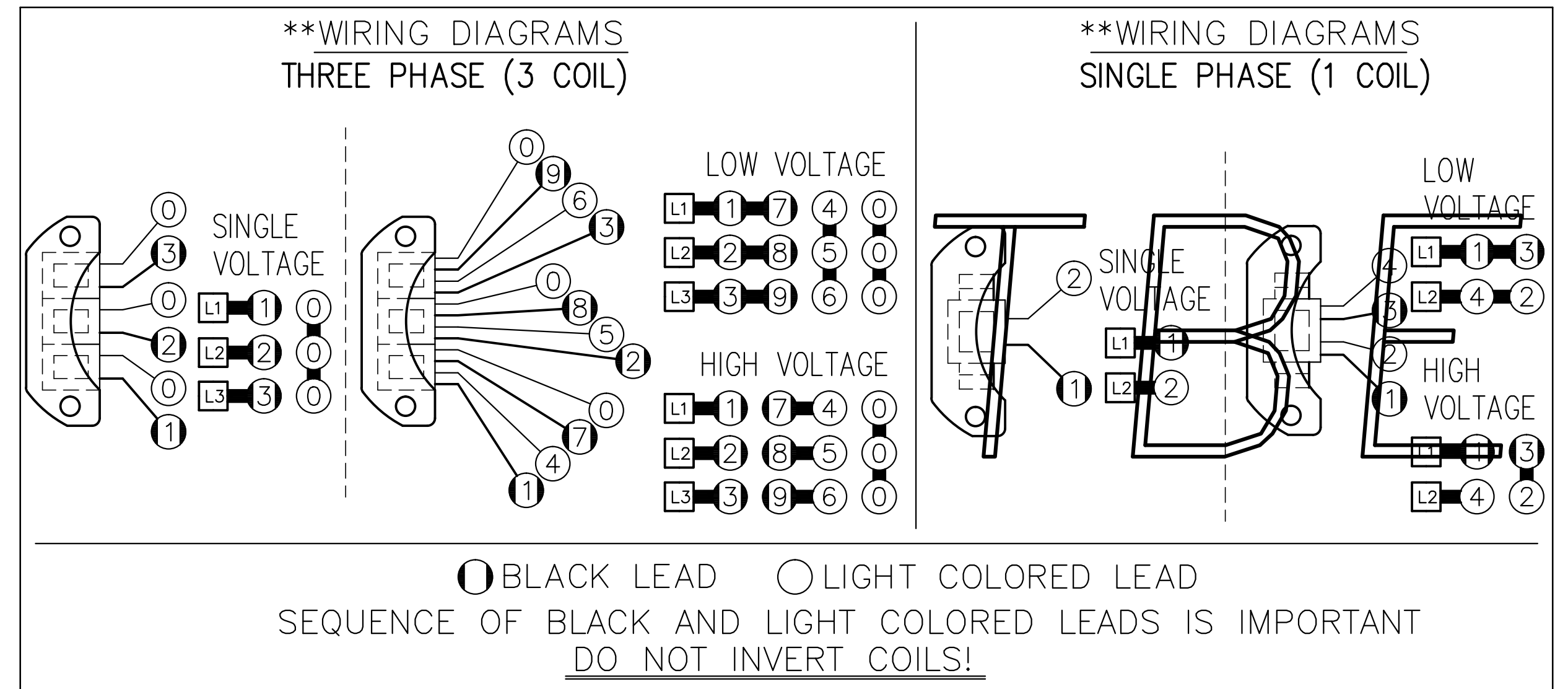
\*\*\* CALCULATED USING H070394-001

ENCLOSED HOUSING MODEL	TORQUE LB.FT.	No. OF ROTATING FRICTION DISCS	MAX. RPM	*** THERMAL CAPACITY HPS/MIN.	*** INERTIA WK <sup>2</sup> LB.FT. <sup>2</sup>	DIMENSIONS							ENCLOSURE MATERIAL	
						"C"	"D" ±.005		"H"	"N" ±1/32	"X"	"AC"		"OD"
							MAX.	ORIGINAL SETTING						
71010-EC6W	10	1	3600	****	.047	6.91	.100	.040	2.59	1.50	1.00	1.13	9.00	CAST IRON
71015-EC6W	15	1	3600	****	.047	6.91	.100	.040	2.41	1.50	1.00	1.13	9.00	CAST IRON
72025-EC6W	25	2	3600	****	.075	6.91	.100	.040	2.50	2.00	1.50	1.13	9.00	CAST IRON
72035-EC6W	35	2	3600	****	.075	6.91	.100	.040	2.34	2.00	1.50	1.13	9.00	CAST IRON
73050-EC6W	50	3	3600	****	.103	7.47	.100	.050	2.34	2.50	2.00	1.69	9.00	CAST IRON
74075-EC6W	75	4	3600	****	.130	8.03	.100	.060	2.28	3.00	2.50	2.25	9.00	CAST IRON
74105-EC6W	105	4	3600	****	.130	8.03	.100	.060	2.31	3.00	2.50	2.25	9.00	CAST IRON
74125-EC6W	125	4	3600	****	.130	8.03	.080	.060	2.19	3.00	2.50	2.25	9.00	CAST IRON



SYMBOL KEY:

- "C"= ENCLOSURE LENGTH
- "D"= MAGNET AIR GAP
- "H"= INSTALLED SPRING LENGTH
- "N"= HUB LOCATION DIMENSION
- "X"= OVERALL HUB/SHAFT CONTACT LENGTH
- "AC"= EXTERNAL WIRING OUTLET DIMENSION
- "OD"= OUTER DIAMETER



\*\*SEE BULLETIN BK4774 FOR OPERATING, INSTALLATION AND PARTS INSTRUCTIONS

\*\*\*\* CONTACT FACTORY

THIS MATERIAL IS PROPERTY OF DINGS COMPANY. NO RIGHTS ARE GRANTED TO USE SUCH MATERIAL FOR ANY PURPOSE OTHER THAN (1) PRODUCT EVALUATION OR MAINTENANCE OR (2) THE FURNISHING OF SERVICES AND SUPPLIES TO THE DINGS COMPANY.

TITLE: OUTLINE DRAWING, 70 SERIES BRAKE (8700)  
IP56 (NEMA 4X) WITHOUT HUB SEAL; (S7EC6W)

TOLERANCE UNLESS OTHERWISE NOTED  
 .000 ± FRACTIONS ±  
 .00 ANGLES ±  
 .00

DRN BY: DBM  
 DATE: 10-15-13  
 SCALE: FULL

CHD BY:  
 DATE:  
 SCALE: FULL

REFER TO: CAD FILE: L070460-1

DRAWING NO.: L070460  
 SHEET: 1 OF 1  
 REV. NO.:

DINGS DYNAMICS  
 4740 WEST ELECTRIC AVE.  
 MILWAUKEE, WISCONSIN 53219 U.S.A.

REV	CHG#	DATE	BY	REVISION

TBE