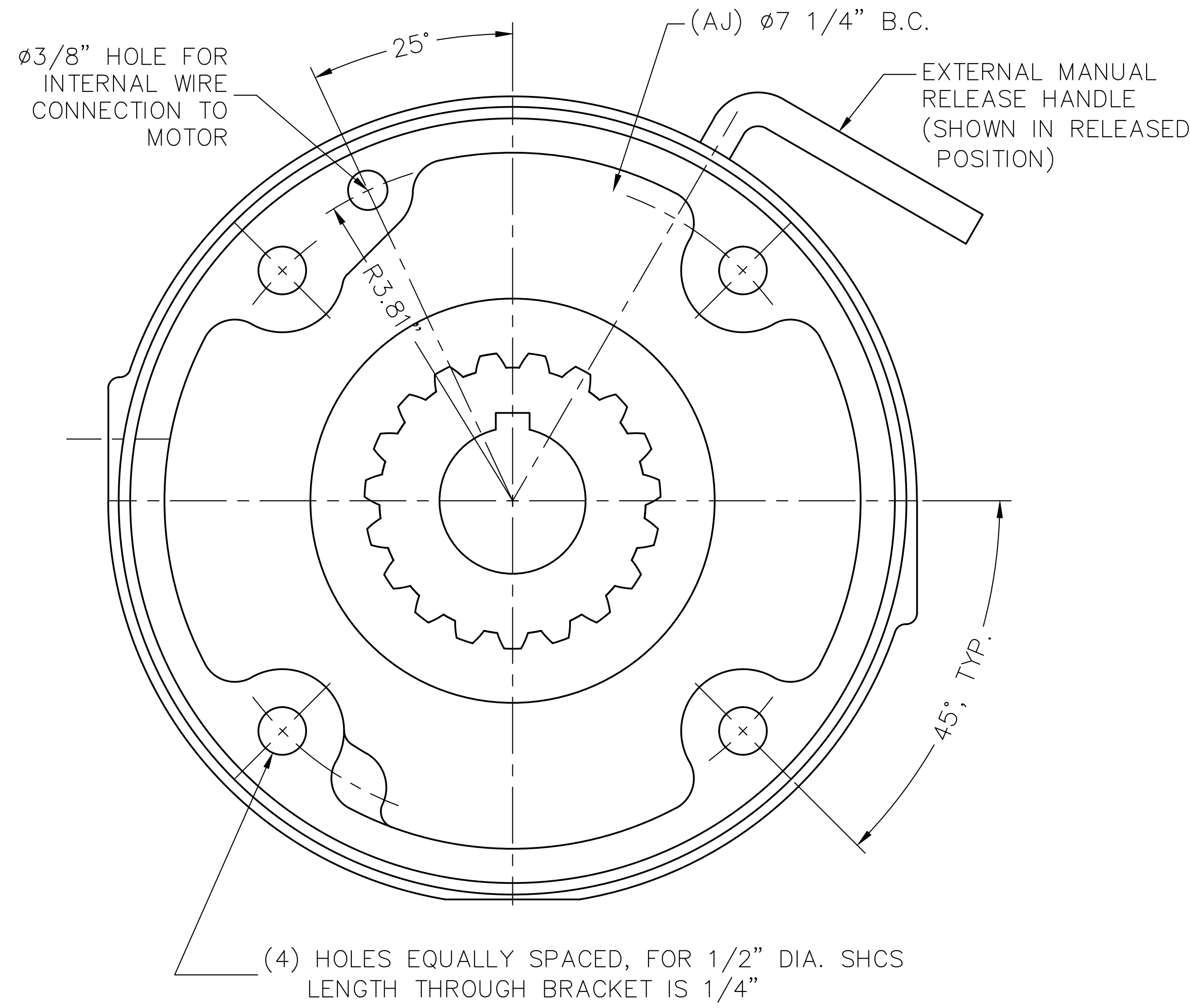
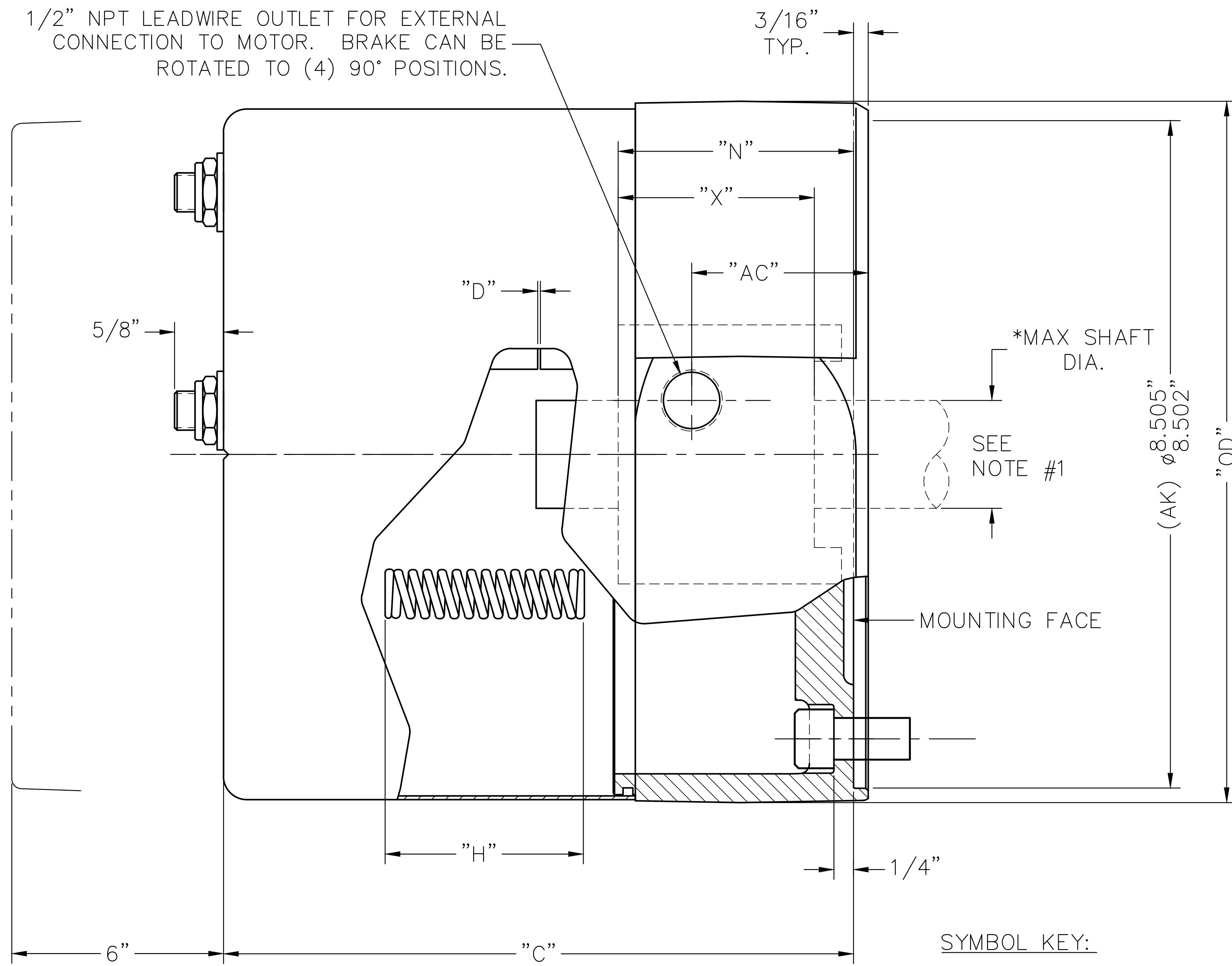


1/2" NPT LEADWIRE OUTLET FOR EXTERNAL CONNECTION TO MOTOR. BRAKE CAN BE ROTATED TO (4) 90° POSITIONS.



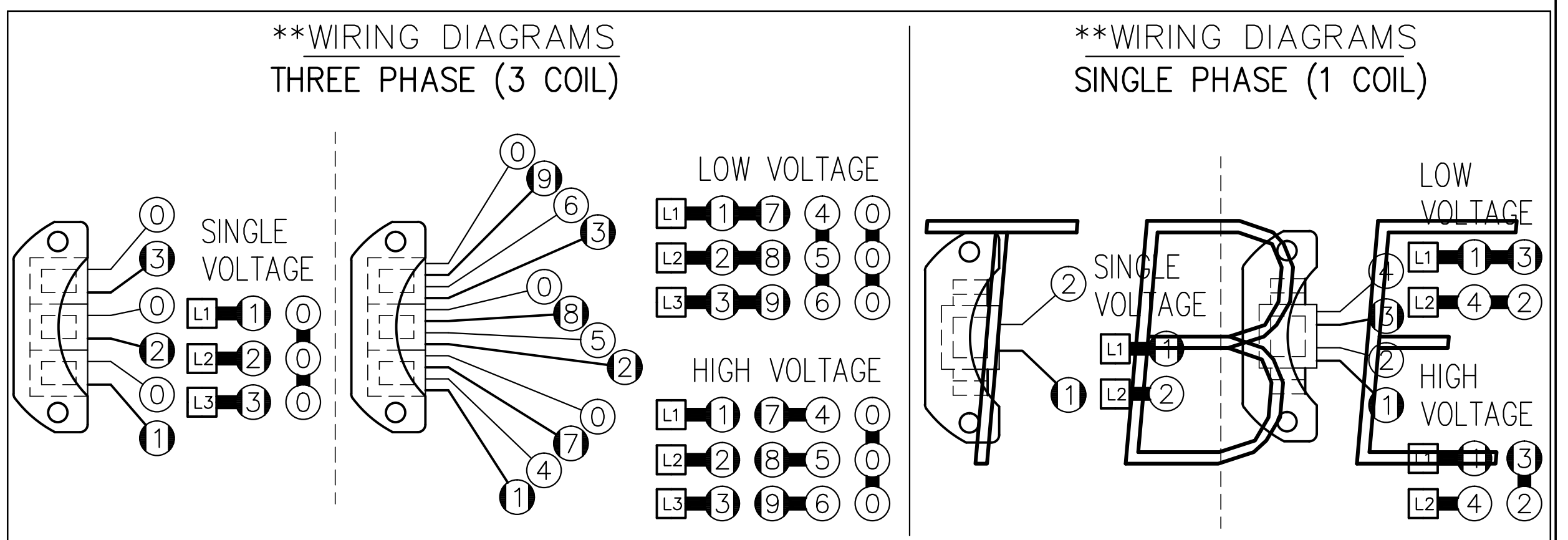
SYMBOL KEY:

- "C"= ENCLOSURE LENGTH
- "D"= MAGNET AIR GAP
- "H"= INSTALLED SPRING LENGTH
- "N"= HUB LOCATION DIMENSION
- "X"= OVERALL HUB/SHAFT CONTACT LENGTH
- "AC"= EXTERNAL WIRING OUTLET DIMENSION
- "OD"= OUTER DIAMETER

NOTE #1:
THE MAXIMUM SHAFT DIAMETER FOR THIS BRAKE IS ø1-5/8" WITH STANDARD KEYWAY. MINIMUM (OR PILOT BORE) DIAMETER IS ø3/4".

*** CALCULATED USING H070394-001

ENCLOSED HOUSING MODEL	TORQUE LB.FT.	No. OF ROTATING FRICTION DISCS	MAX. RPM	*** THERMAL CAPACITY HPS/MIN.	*** INERTIA WK ² LB.FT. ²	DIMENSIONS						BRACKET MATERIAL	COVER MATERIAL		
						"C"	"D" ±.005 MAX.	ORIGINAL SETTING	"H"	"N" ±1/32	"X"			"AC"	"OD"
71010-ES41	10	1	3600	****	.047	6.91	.100	.040	2.59	1.50	1.00	1.13	9.00	CAST IRON	STAMP STEEL
71015-ES41	15	1	3600	****	.047	6.91	.100	.040	2.41	1.50	1.00	1.13	9.00	CAST IRON	STAMP STEEL
72025-ES41	25	2	3600	****	.075	6.91	.100	.040	2.50	2.00	1.50	1.13	9.00	CAST IRON	STAMP STEEL
72035-ES41	35	2	3600	****	.075	6.91	.100	.040	2.34	2.00	1.50	1.13	9.00	CAST IRON	STAMP STEEL
73050-ES41	50	3	3600	****	.103	7.47	.100	.050	2.34	2.50	2.00	1.13	9.00	CAST IRON	STAMP STEEL
74075-ES41	75	4	3600	****	.130	8.03	.100	.060	2.28	3.00	2.50	1.69	9.00	CAST IRON	STAMP STEEL
74105-ES41	105	4	3600	****	.130	8.03	.100	.060	2.31	3.00	2.50	2.25	9.00	CAST IRON	STAMP STEEL
74125-ES41	125	4	3600	****	.130	8.03	.080	.060	2.19	3.00	2.50	2.25	9.00	CAST IRON	STAMP STEEL



○ BLACK LEAD ○ LIGHT COLORED LEAD
SEQUENCE OF BLACK AND LIGHT COLORED LEADS IS IMPORTANT
DO NOT INVERT COILS!

**SEE BULLETIN BK4772 FOR OPERATING, INSTALLATION AND PARTS INSTRUCTIONS

**** CONTACT FACTORY

TBE

THIS MATERIAL IS PROPERTY OF DINGS COMPANY. NO RIGHTS ARE GRANTED TO USE SUCH MATERIAL FOR ANY PURPOSE OTHER THAN (1) PRODUCT EVALUATION OR MAINTENANCE OR (2) THE FURNISHING OF SERVICES AND SUPPLIES TO THE DINGS COMPANY.

TITLE: OUTLINE DRAWING, 70 SERIES BRAKE (8700)
IP41 (NEMA 2) (S7ES41)

TOLERANCE UNLESS OTHERWISE NOTED
.000 ± FRACTIONS ±
.00 ± ANGLES ±

DRN BY: DBM
DATE: 10-16-13
SCALE: FULL

CHKD BY:
DATE: 10-16-13
SCALE: FULL

REFER TO CAD FILE: L070462-1

DRAWING NO. L070462
SHEET 1 OF 1
REV. NO.

4740 WEST ELECTRIC AVE.
MILWAUKEE, WISCONSIN 53219 U.S.A.

DINGS DYNAMICS

REV	CHG#	DATE	BY	REVISION