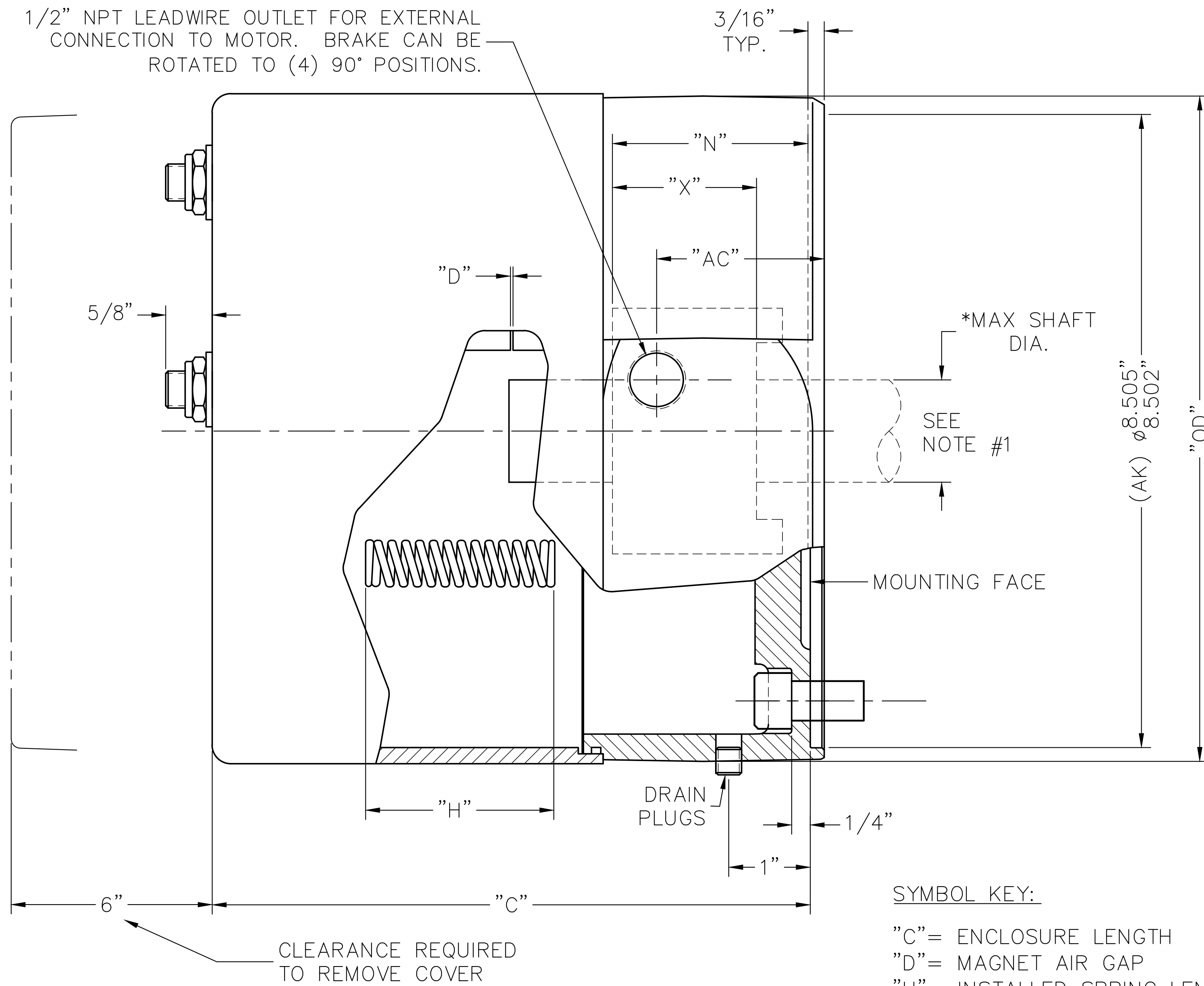


1/2" NPT LEADWIRE OUTLET FOR EXTERNAL CONNECTION TO MOTOR. BRAKE CAN BE ROTATED TO (4) 90° POSITIONS.

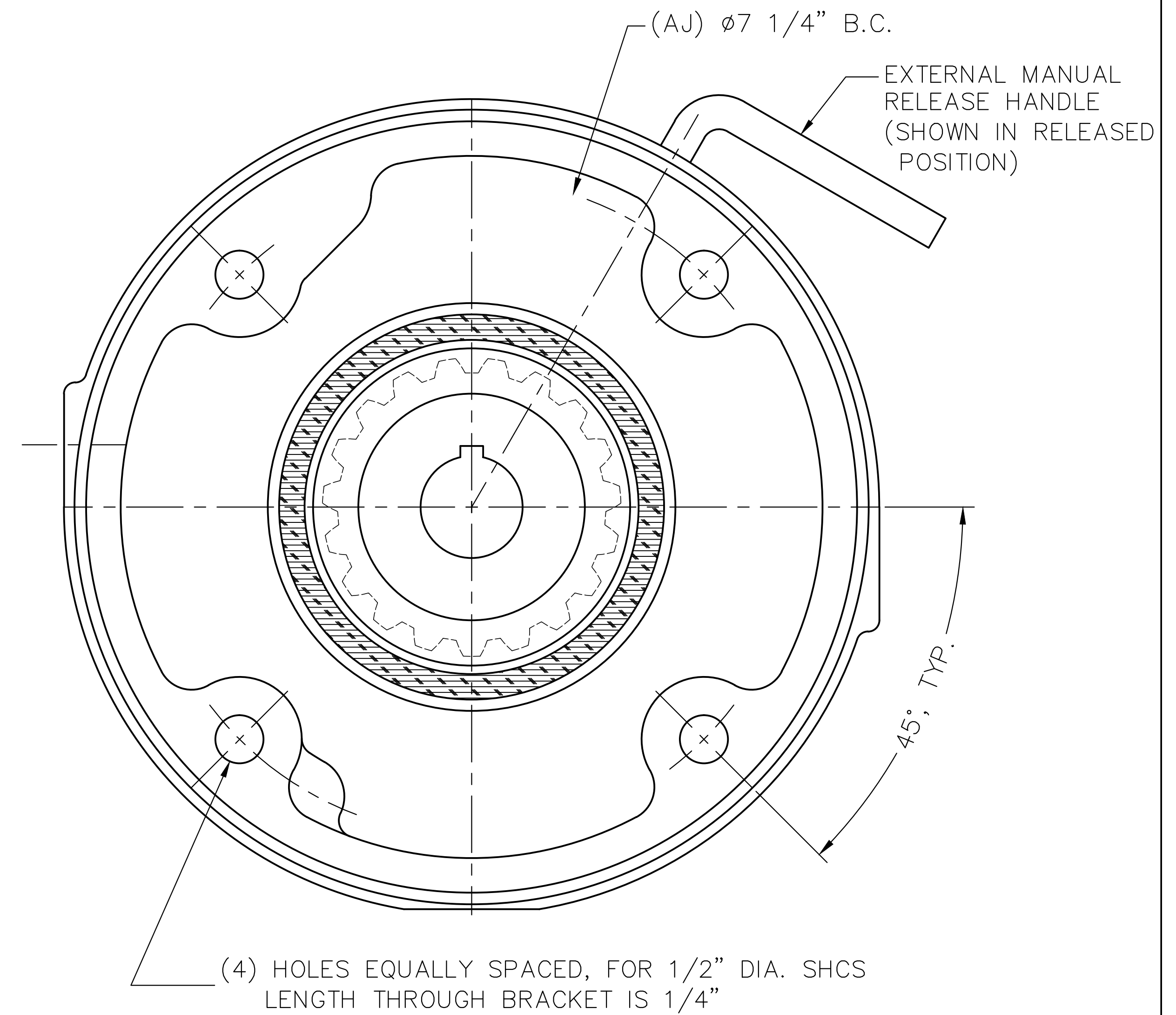


NOTE #1:  
THE MAXIMUM SHAFT DIAMETER FOR THIS BRAKE IS  $\phi 1-5/8$ " WITH STANDARD KEYWAY. MINIMUM (OR PILOT BORE) DIAMETER IS  $\phi 3/4$ ".

\*\*\* CALCULATED USING H070394-001

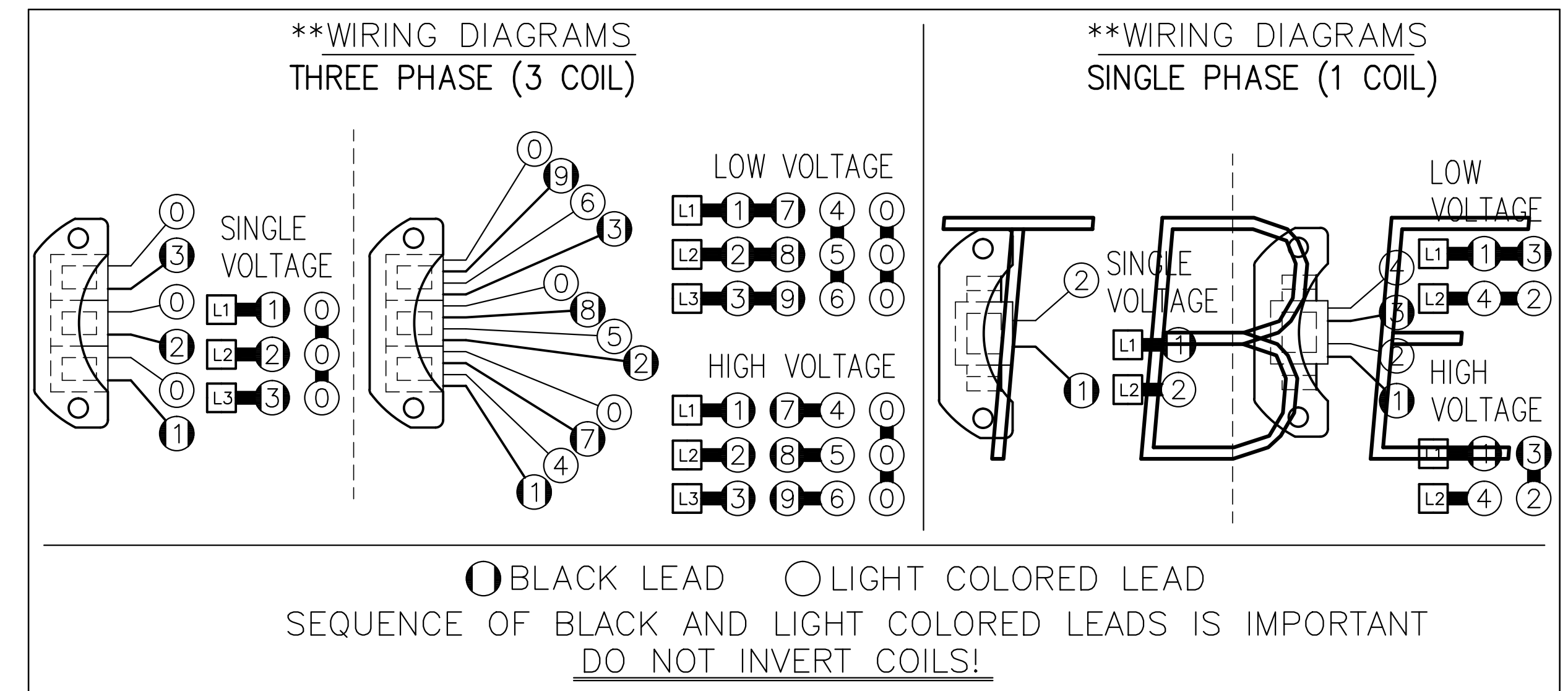
ENCLOSED HOUSING MODEL	TORQUE LB.FT.	No. OF ROTATING FRICTION DISCS	MAX. RPM	*** THERMAL CAPACITY HPS/MIN.	*** INERTIA WK <sup>2</sup> LB.FT. <sup>2</sup>	DIMENSIONS							ENCLOSURE MATERIAL	
						"C"	"D" $\pm .005$		"H"	"N" $\pm 1/32$	"X"	"AC"		"OD"
							MAX.	ORIGINAL SETTING						
71010-SC61	10	1	3600	****	.047	6.91	.100	.040	2.59	1.50	1.00	1.13	9.00	CAST IRON
71015-SC61	15	1	3600	****	.047	6.91	.100	.040	2.41	1.50	1.00	1.13	9.00	CAST IRON
72025-SC61	25	2	3600	****	.075	6.91	.100	.040	2.50	2.00	1.50	1.13	9.00	CAST IRON
72035-SC61	35	2	3600	****	.075	6.91	.100	.040	2.34	2.00	1.50	1.13	9.00	CAST IRON
73050-SC61	50	3	3600	****	.103	7.47	.100	.050	2.34	2.50	2.00	1.69	9.00	CAST IRON
74075-SC61	75	4	3600	****	.130	8.03	.100	.060	2.28	3.00	2.50	2.25	9.00	CAST IRON
74105-SC61	105	4	3600	****	.130	8.03	.100	.060	2.31	3.00	2.50	2.25	9.00	CAST IRON
74125-SC61	125	4	3600	****	.130	8.03	.080	.060	2.19	3.00	2.50	2.25	9.00	CAST IRON

TBE



SYMBOL KEY:

"C" = ENCLOSURE LENGTH  
 "D" = MAGNET AIR GAP  
 "H" = INSTALLED SPRING LENGTH  
 "N" = HUB LOCATION DIMENSION  
 "X" = OVERALL HUB/SHAFT CONTACT LENGTH  
 "AC" = EXTERNAL WIRING OUTLET DIMENSION  
 "OD" = OUTER DIAMETER



\*\*SEE BULLETIN BK4773 FOR OPERATING, INSTALLATION AND PARTS INSTRUCTIONS

\*\*\*\* CONTACT FACTORY

THIS MATERIAL IS PROPERTY OF DINGS COMPANY. NO RIGHTS ARE GRANTED TO USE SUCH MATERIAL FOR ANY PURPOSE OTHER THAN (1) PRODUCT EVALUATION OR MAINTENANCE OR (2) THE FURNISHING OF SERVICES AND SUPPLIES TO THE DINGS COMPANY.

TITLE: OUTLINE DRAWING, 70 SERIES BRAKE (8700)  
 IP56 (NEMA 4) WITH HUB SEAL; (S7SC61)

TOLERANCE UNLESS OTHERWISE NOTED  
 .000  $\pm$  FRACTIONS  $\pm$   
 .00 ANGLES  $\pm$

DRN BY: DBM  
 DATE: 10-16-13

CHKD BY:  
 SCALE: FULL

DRAWING NO.: L070465  
 SHEET: 1 OF 1  
 REV. NO.:

4740 WEST ELECTRIC AVE.  
 MILWAUKEE, WISCONSIN 53219 U.S.A.

REFER TO CAD FILE: L070465-1

REV	CHG#	DATE	BY	REVISION