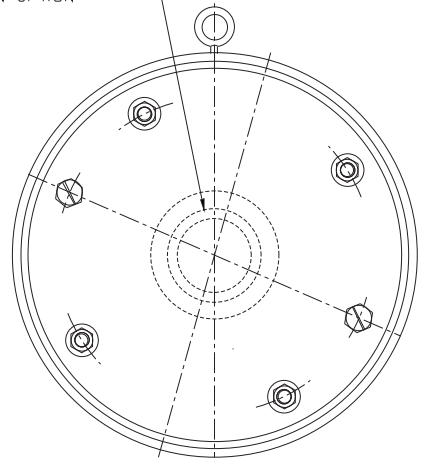
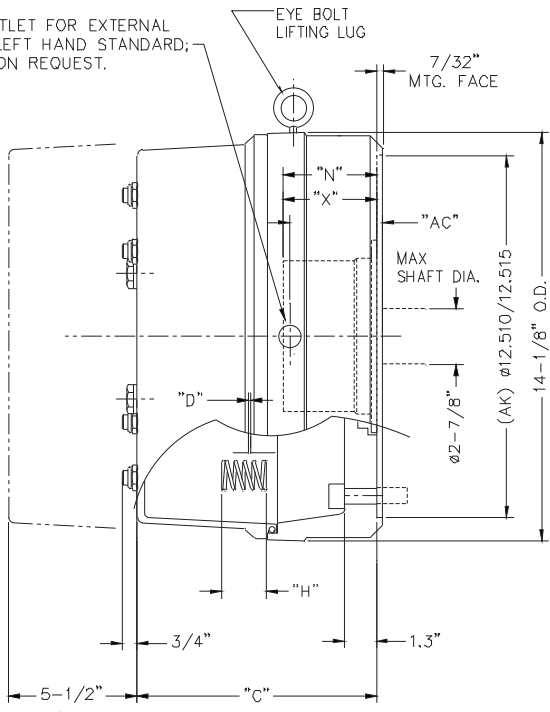


SEALED "THROUGH SHAFT"
COVER AVAILABLE AS
AN OPTION

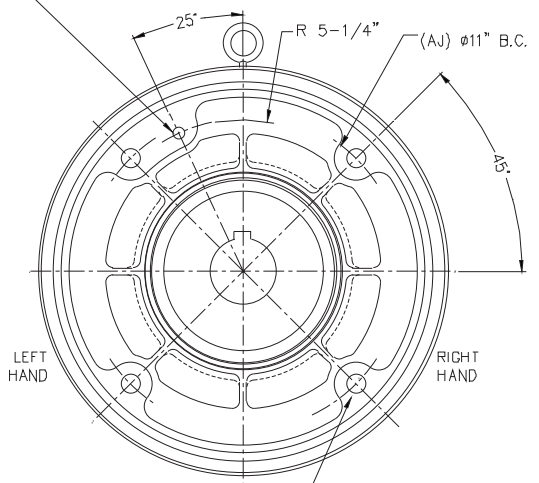


1/2" NPT LEADWIRE OUTLET FOR EXTERNAL
CONNECTION TO MOTOR. LEFT HAND STANDARD;
RIGHT HAND UPON REQUEST.



CLEARANCE REQUIRED
TO REMOVE COVER

Ø1/2" INTERNAL LEAD WIRE HOLE
(STANDARD ON MODELS 9xxxx-52 ONLY)



(4) HOLES, EQUALLY SPACED,
FOR 5/8 DIA. SOC. HD. CAP SCREW -
LENGTH THRU BRACKET = 1.3"

**** FOR SMART BRAKE OPTION OUTLINE SEE L090194

MODEL NUMBER WITH HUB SEAL	MODEL NUMBER W/O HUB SEAL	TORQUE LB.FT.	No. OF ROTATING FRICTION DISCS	MAX. RPM	INERTIA WK ² LB.FT. ²	DIMENSIONS						ENCLOSURE MATERIAL	
						"C"	"D" ±.005		"H"	"N" ±1/32	"X"		"AC"
							MAX.	ORIGINAL SETTING					
92125-51	92125-52	125	2	2400	1.0	7.66	.080	.035	1.38	2.31	2.31	2.19	CAST IRON
92180-51	92180-52	180	2	2400	1.0	7.66	.070	.035	1.19	2.31	2.31	2.19	CAST IRON
93230-51	93230-52	230	3	2400	1.3	8.03	.080	.040	1.31	2.94	2.94	2.19	CAST IRON
93270-51	93270-52	270	3	2400	1.3	8.03	.070	.040	1.19	2.94	2.94	2.19	CAST IRON
94330-51	94330-52	330	4	2400	1.6	8.66	.070	.045	1.25	3.56	3.56	3.44	CAST IRON
94360-51	94360-52	360	4	2400	1.6	8.66	.070	.045	1.19	3.56	3.56	3.44	CAST IRON
95450-51	95450-52	450	5	2400	1.9	9.28	.070	.050	1.19	3.56	3.56	3.44	CAST IRON

SYMBOL KEY:
 "C" = ENCLOSURE LENGTH
 "D" = MAGNET AIR GAP
 "H" = INSTALLED SPRING LENGTH
 "N" = HUB LOCATION DIMENSION
 "X" = OVERALL HUB LENGTH
 "AC" = EXTERNAL WIRING OUTLET DIMENSION

THIS MATERIAL IS PROPERTY OF DYNIS COMPANY. NO RIGHTS ARE GRANTED TO USE SUCH MATERIAL FOR ANY PURPOSE OTHER THAN (1) PRODUCT EVALUATION OR MAINTENANCE BY THE PURCHASER OF SERVICES AND SUPPLIES TO THE DYNIS COMPANY.

THE OUTLINE DRAWING, 90 SERIES BRAKE, NEMA 4
 New 90 (59051) (59052)

TOLERANCE UNLESS OTHERWISE NOTED
 DIMENSIONS IN INCHES
 DIMENSIONS IN MILLIMETERS

Dynis DYNAMICS
 14000 WILSON AVENUE
 WILSON, OHIO 44095

DATE: 11-18-15
 SCALE: 1/2"=1"
 DRAWING NO: L090175
 SHEET NO: 1 OF 1

B	2751	8-16-15	ESM	ADDED MOTOR MOUNT / CHD 1" DIA
A	2686	11-18-15	ESM	ADDED 1 DISC - 60B-11, H & D VALUES
REV	CHG	DATE	BY	REVISION

CAD FILE: L090175-1-B