



# 70 Series Double Shafted Brake with Foot Mount Instructions

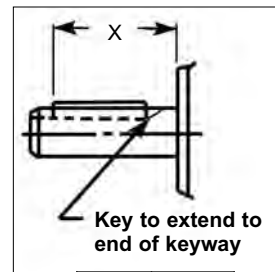
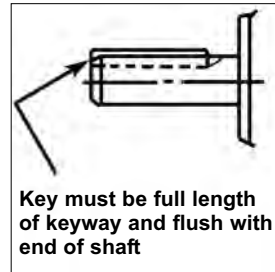


## IMPORTANT

Read carefully before attempting to assemble, install, operate or maintain the product described. Protect yourself and others by observing all safety information. Failure to comply with instructions could result in personal injury and/or property damage! Retain instructions for future reference. When unpacking the brake, inspect it carefully for damage that may have occurred during transit.

## INSTALLATION

Refer to Figures 1 & 2  
Insert key into motor shaft keyway. Key length to be as shown below for models designated.



Model	X ± 1/32
71010 71015	1-15/16
72025 72035	2-7/16

Used on all models except 71010, 71015, 72025, and 72035 with 1-1/8" dia. shaft.

For models 71010, 71015, 72025 and 72035 with 1-1/8" dia. shaft.

Install brake into location using bolt holes in foot mounting bracket. Connect coil leads per appropriate diagram.

## WARNING

Brake performance and features must be carefully matched to the requirements of the application.

Consideration must be given to torque requirements, especially where an overhauling condition exists, as well as thermal capacity, ambient temperature, atmospheric explosion hazards, type of enclosure and any other unusual conditions.

Improper selection and installation of a brake and/or lack of maintenance may cause brake failure which could result in damage to property and/or injury to personnel.

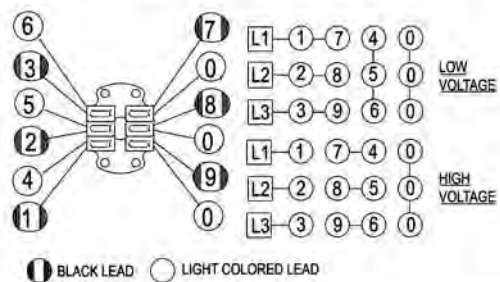
If injury to personnel could be caused by brake failure, additional means must be provided to insure safety of personnel.

## DESCRIPTION

This brake is direct acting, electromagnetically released and spring set. It uses rotating and stationary disc contact to supply positive braking action. It retains quick release and setting capabilities at all times.

Simplicity of design has reduced maintenance to an absolute minimum. As with any electromechanical equipment, however, periodic inspection and adjustment will assure optimum performance. As the friction disc wears, the magnet gap will increase. The magnet gap should be checked periodically and adjusted when necessary. This brake is offered as a standard (NEMA 2) enclosure.

## THREE PHASE



## SINGLE PHASE

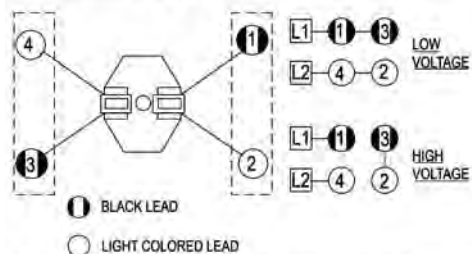


Figure 1. Wiring Diagram

## MANUAL RELEASE

(See Figure 4)

To operate release, rotate two knobs (18) clockwise until stop screw (16) hits pin. Brake will remain in released position until rods are manually returned to original position, or until electrical power is restored, automatically resetting the brake.

## TORQUE ADJUSTMENT

(See Figures 2 & 4–Table 1)

Brake is factory set for rated torque per spring length “H”. To increase stopping time and lower torque, turn two locknuts (22) counterclockwise, increasing dimension “H”. Both springs must be set to the same length. Do not decrease spring length “H” as this may cause coil to burn out.

## MAINTENANCE AND SERVICE

### WEAR ADJUSTMENT

(See Figures 2 & 4– Table 1)

Magnet gap “D” increases as friction discs wear. When gap approaches “D” max., adjust gap to “D” min. dimension by turning nuts (28 and 29). Magnet gap can vary from nominal  $\pm .005$  between corners. After setting gap, readjust torque spring length “H”.

**CAUTION: MAGNET GAP MUST NOT EXCEED “D” MAXIMUM.**

## FRICITION DISC REPLACEMENT

(See Figure 4 & Table 1)

When the rotating friction disc (3) wears down to a thickness of  $7/32$ ”, replace disc. Remove brake from its current mounting location and any parts mounted to double shaft ends. Remove lock collar on bearing (23 or 37) on housing adaptor side only. Continue disassembling in this order: two nuts (28), adaptor housing (7), roll pins (19), manual release screws (16), manual release washers (14), manual release shims (15), two nuts (19), magnet mounting plate assembly (6), two nuts (29), two nuts (22), torque spring washers (11), torque springs (10), pressure plate assembly (5) and discs (4) (3).

Replace worn friction discs (3) and reassemble disc pack. Continue reassembling in reverse order, setting torque spring dimension “H,” and magnet gap “D” min. (Table 1.). When assembling manual release, turn release rod (12) counter-clockwise until screw (15) strikes pin. Wind torsion spring (13) about 1/4 turn and hook spring over pin.

**NOTE:** When assembling manual release mechanism, add only enough shim washers (15) to obtain proper release action. With too many shim washers, brake will not automatically reset when electrical power is applied. With too few shim washers, motor shaft will not turn freely with brake in manually released position.

**IMPORTANT:** Make sure release is working properly before proceeding.

Place adaptor housing (7) over shaft (8) and complete assembly with two nuts (28) before tightening lock collar on bearing (23 or 37). Release brake by turning two knobs (18) clockwise.

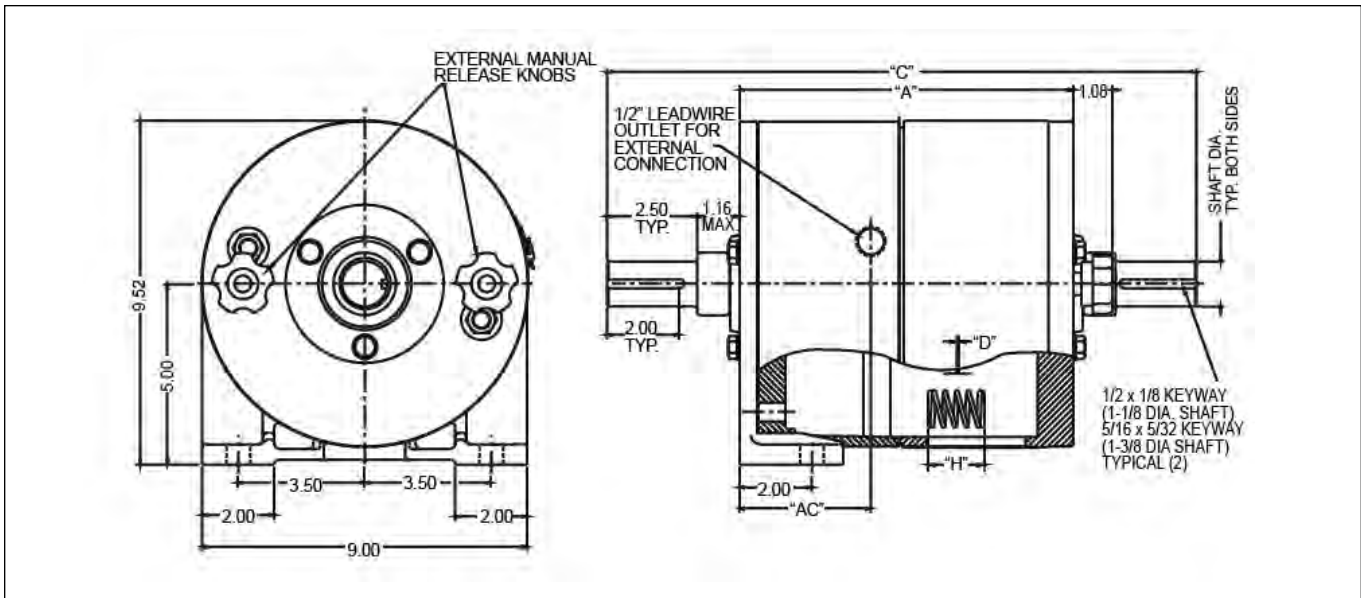


Figure 2. Outline Drawing

MODEL NUMBER	# of friction discs	Torque lb-ft	Thermal Capacity HPS/Min	Inertia WK <sup>2</sup> LB-FT <sup>2</sup>	DIMENSIONS						
					A	AC	C		D $\pm .005$		H
							1-1/8 shaft	1-3/8 shaft	MAX	MIN	
6-71010-114	1	10	11	.069	7.63	1.97	14.74	14.95	.070	.030	1.31
6-71015-114	1	15	11	.069	7.63	1.97	14.74	14.95	.070	.030	1.31
6-72025-114	2	25	12	.110	8.26	2.41	15.36	15.57	.070	.035	1.31
6-72035-114	2	35	12	.110	8.26	2.41	15.36	15.57	.070	.035	1.21
6-73050-114	3	50	13	.150	8.88	3.03	15.96	16.20	.070	.040	1.25
6-74075-114	4	75	14	.190	9.51	3.66	16.61	16.82	.070	.040	1.21

Table 1. List of Models and Dimensions

## MAGNET COIL REPLACEMENT

(See Figures 1, 3 & 4)

Remove magnet assembly as outlined under FRICTION DISC REPLACEMENT.

Coils (6b) are held in place with epoxy cement. Force coil off magnet mounting plate and remove excess epoxy from all surfaces.

Replacement coils should be held in place with new epoxy cement. The epoxy cement should be heat resistant and shock resistant. Place an insulating washer (6c) below the coils. Order insulating washers when ordering coils. An insulating washer can be cut to suit when replacing only one coil on a multiple coil assembly.

When installing coils, it is very important to follow EXACTLY the sequence of black and light colored leads as shown in wiring diagram (Figure 1). The brake will not operate properly unless coils are all in the correct position.

Reassemble all parts in reverse order.

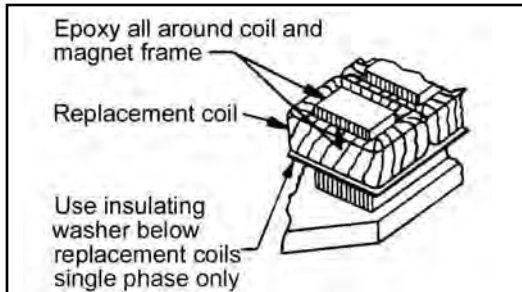


Figure 3. Fastening of Replacement Magnet Coils

## TROUBLE SHOOTING

### A. IF BRAKE DOES NOT RELEASE:

1. Check brake visually for broken or damaged parts.
2. Check for broken leadwire or bad electrical connection.
3. Check for correct voltage. Line voltage must correspond to the voltage for which the brake coils are connected. If the line voltage is more than 10% below the voltage for which the brake coils are connected, the magnet will not pull in, causing the coils to burn out within minutes. If the line voltage is more than 10% above the voltage for which the brake coils are connected, the coils will overheat and burn out.
4. Check for burned-out coils (coils may be charred or burned).
5. Check for excessive magnet gap. (See WEAR ADJUSTMENT.)
6. Check for failure or power supply to brake.

### B. IF BRAKE DOES NOT STOP:

1. Check brake visually for broken or damaged parts.
2. Make certain hub has not shifted position on the motor shaft and that all rotating discs are fully engaged on the hub.
3. Check that the manual release is in the normal position.
4. Check disc wear. (See WEAR ADJUSTMENT.)

### C. IF BRAKE CHATTERS OR HUMS:

1. See that magnet faces are clean. To remove dirt, insert a clean sheet of paper between magnet faces and energize brake. Move paper around between faces to dislodge dirt, then remove paper.
2. Check for low voltage. Magnet will not pull in, and coils will burn out if line voltage is beyond 10% below the voltage the brake coils are connected for.
3. See that magnet faces are parallel within tolerance. Readjust magnet gap to "D" min. (See WEAR ADJUSTMENT.)
4. Check if shading coil (6d) is cracked, broken or out of position (single phase only).

### D. IF MANUAL RELEASE DOES NOT WORK:

1. Check for broken or damaged parts.
2. Check return spring (13). Brake will not reset automatically if this spring is broken.
3. Check quantity of shim washers (15) under release stop screws. (See Manual Release Assembly under "FRICTION DISC REPLACEMENT".)

## SPECIFICATIONS

**MOTOR FRAMES** - 182TC, 184TC, 213TC, 215TC, 254TC, 256TC.

**ENCLOSURES** - NEMA 2

(material: aluminum and cast iron)

**DUTY** - Rated for continuous duty.

**VOLTAGES** - All standard NEMA voltages and frequencies available. Other voltages and frequencies are optional.

**MOUNTING** - Direct to NEMA "C" face, with one additional "C" face for mounting of equipment to brake. Some standard motor shafts may need modification, see Table 1.

Horizontal or vertical mounting with modifications.

## ORDERING INFORMATION

The following data should be furnished with your order for:

### REPLACEMENT PARTS

Brake Model Number

Part Number from Tables

Part Description from Tables

Hub Bore & Keyway. Shaft Extension Diameter & Keyway.

For electrical parts specify voltage, phase, and frequency.

### REPLACEMENT BRAKE

Model Number

Voltage, Phase & Frequency

Hub Bore & Keyway Dimensions. Shaft Extension Diameter & Keyway.

Mounting - Horizontal or Vertical. (If vertical, specify whether above or below motor.)

Figure 4

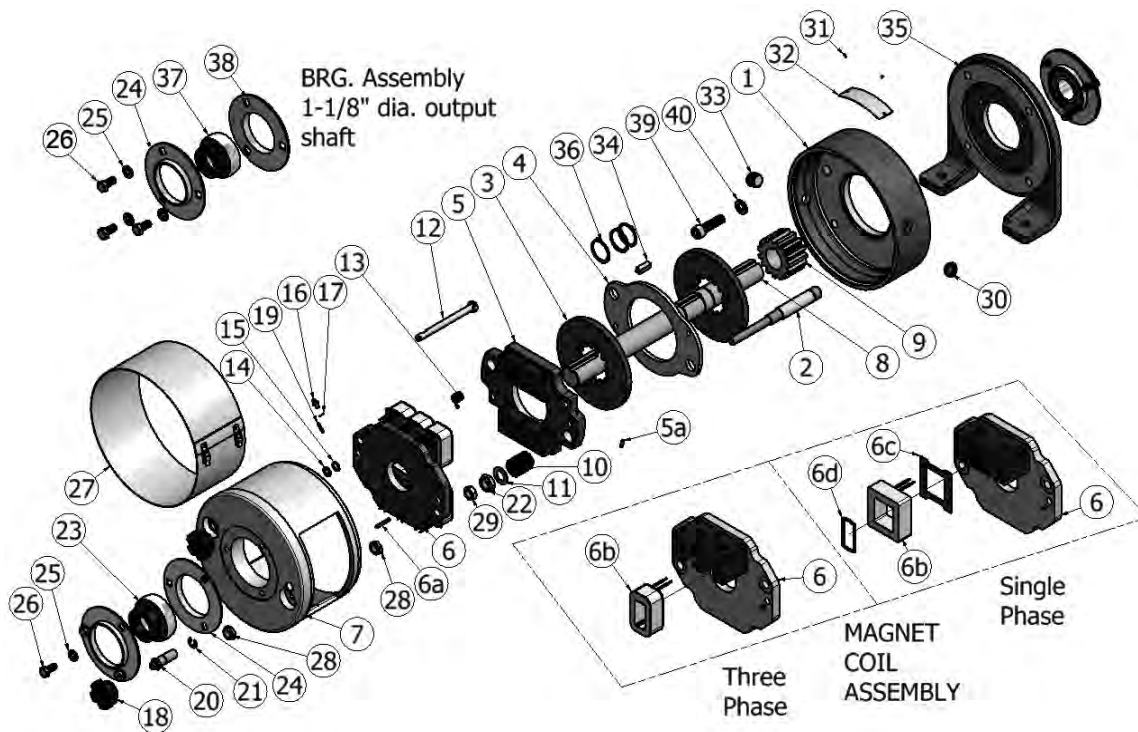


Table 2. Parts List

ITEM NO.	PCS. REQ'D	DESCRIPTION	PART NUMBER
1	1	Bracket (Specify brake model no.)	L070203
2	2	Studs (Specify brake model no.)	H070180
3	*	Rotating friction disc	H070103-008
4	**	Stationary disc	K070485-001
5	1	Pressure plate assembly	K070045-001
5a	2	Roll Pin, 5/32 x 9/16 lg.	W005003-101
6	1	Magnet mounting plate assembly for 3-phase magnets (Includes items 6a-6b)	K070097
6	1	Magnet mounting plate assembly for 1-phase magnets (Includes items 6a-6d)	K070335
6a	2	Roll Pin, 5/32 x 1-1/8 lg.	W005003-109
6b	6	Coils-three phase (See ordering info.)	H020003
6b	2	Coils-single phase (See ordering info.)	H070013
6c	2	Insulating washers, 1-phase coils	G070029-001
6d	2	Shading coil (Single phase only)	G070032-001
7	1	Housing (1-1/8 shaft)	L070440-001
7	1	Housing (1-3/8 shaft)	L070440-002
8	1	Shaft (Specify both diameter & keyway)	Consult Factory
9	1	Hub (Specify both diameter & keyway)	Consult Factory
10	2	Torque spring	See torque spring table
11	2	Torque spring washer	W004004-001
12	2	Manual release rod	G070834-001
13	2	Manual release spring	G060010-001
14	2	Manual release washer	W004004-003C
15	As Req'd	Manual release shims	W004004-004C
16	2	Manual release stop screw	G060029-001
17	2	Manual release lockwasher	W004007-007
18	2	Manual release knob	W035002-001
19	2	Roll Pin, 1/8 x 3/4 lg.	W005003-073

\* Number of rotating discs is designated by model number; example:6-72025-114 has two rotating discs. Also see table 1 for number of rotating discs.

\*\* Number of stationary discs is one less than the number of rotating discs.

Table 2. Parts List

ITEM NO.	PCS. REQ'D	DESCRIPTION	PART NUMBER
20	2	Manual release shaft	G070833-001
21	2	Snap ring, Manual release	W006008-005
22	2	Torque adjust nut	W003001-022
23	2	Ball bearing, double seal (1-3/8 shaft)	W009007-009
24	2	Bearing flange plate set, 72MS (1-3/8 shaft)	W009006-005
25	6	Lockwasher, 3/8	W004006-008
26	6	3/8-16 X 7/8 bolt	W001007-054
27	1	Wrap cover	K070228-001
28	4	ESNA locknut 1/2-20	W003001-020
29	2	Hex jam nut 1/2-20	W003003-023
30	1	Cap plug	W008003-001
31	2	Drive screws, nameplate	W001012-048
32	1	Nameplate	H050020-001
33	1	Pipe Plug, 1/2 NPT	W010002-004
34	1	Key (Specify brake model no. & keyways)	W007001
35	1	Foot mount bracket (1-1/8 shaft)	L070446-001
35	1	Foot mount bracket (1-3/8 shaft)	L070446-002
36	3	Snap ring, (1-1/8 shaft)	W006003-004
36	3	Snap ring, (1-3/8 shaft)	W006003-006
37	2	Ball bearing, double seal (1-1/8 shaft)	W009007-006
38	2	Bearing flange plate set, 62MS (1-1/8 shaft)	W009006-004
39	4	1/2-13 mounting bolt	W001013-132
40	4	1/2 split lockwasher	W004006-010

Torque spring (Item 10) table

Model Number	Torque Spring P/N
6-71010-114	G070011-001
6-71015-114	G070012-001
6-72025-114	G070019-001
6-72035-114	G070012-001
6-73050-114	G070012-001
6-74075-114	G070012-001