

# Brakes for the Food Industry

End Mount and Double C Face Brakes for  
NEMA 56C-143/145TC and 182/184TC-254/256TC Frame Motors

## Dings Aqua-Stop Washdown Brakes

**BISSC certified • NEMA 4X • CSA 4 • IP56 • 3A Dairy**

### Design Features:

- Specifically engineered for the food processing industry
- All Aqua-Stop Plus brake housings are made from **300 SERIES STAINLESS STEEL** for superior corrosion resistance
- One moving part for long reliable life



- Spring set, electrically released for ease of operation
- Shorter operator movement for faster response
- Many options available to meet your unique needs



**Aqua-Stop**  
White epoxy finish



**Aqua-Stop "Plus"**  
300 series stainless steel housing (60 Series only)

### Aqua-Stop and Aqua-Stop "Plus" Specifications - 60 Series

Torque:	1.5, 3, 6, 10, 15, 20, 25* lb. ft. (*end mount only)
Frame Sizes:	56C and 143/145TC
Maximum RPM:	3600
Common Voltages:	115-208/230 VAC 60Hz 208-230/460 VAC 60Hz 575 VAC 60Hz 190/380 VAC 50Hz (Consult factory for other voltages)

### Aqua-Stop Specifications - 70 Series

Torque:	10, 15, 25, 35, 50, 75 lb. ft.
Frame Sizes:	182/184TC, 213/215TC, 254/256TC
Maximum RPM:	3600
Common Voltages:	115-208/230 VAC 60Hz 208-230/460 VAC 60Hz 575 VAC 60Hz 190/380 VAC 50Hz (Consult factory for other voltages)

### Washdown Brake Options:

Housing without access windows (SS only)  
Stainless steel hub and/or shaft

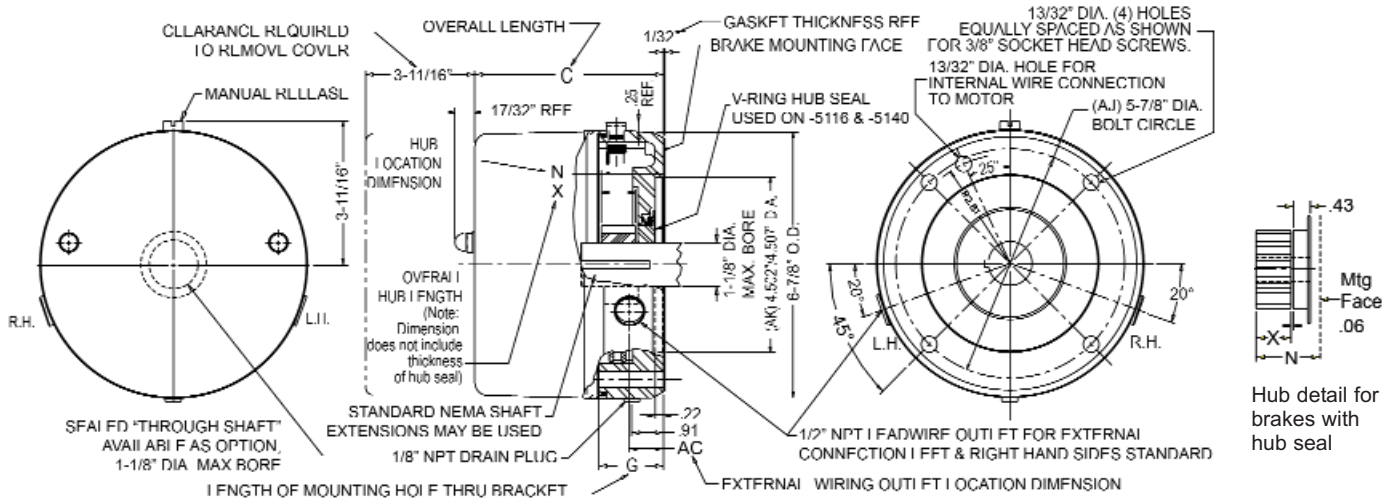
Stainless steel sealed bearing and snap rings  
Viton gaskets and O rings  
Other options available

# 60 Series Dimensions

# NEMA Frame sizes 56C -145TC

## End Mount

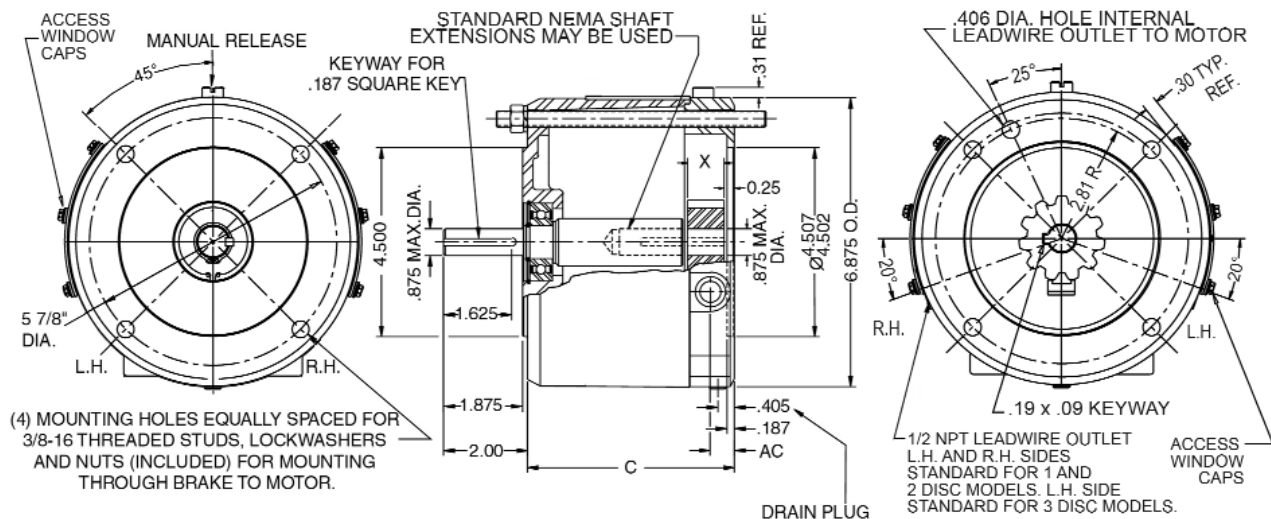
Construction: Cast Iron or Stainless Steel Instructions and Parts Manual: Cast Iron- BK4660 Stainless Steel- BK4661



Torque lb-ft	Model #	Model #	Model #	Model #	Wt. Lbs.	Thermal Capacity HPS/Min	Inertia Wk <sup>2</sup> lb-ft <sup>2</sup>	Dimensions in inches				
	Cast Iron	Stainless Steel	Cast Iron	Stainless Steel				C	N	X Hub Length (without hub seal)	AC	G
	With Hub Seal		Without Hub Seal									
1.5	6-61001-5116	6-61001-5140	6-61001-5115	6-61001-5141	16	6	0.008	4.81	1.59	0.88	0.94	1.63
3	6-61003-5116	6-61003-5140	6-61003-5115	6-61003-5141	16	6	0.008	4.81	1.59	0.88	0.94	1.63
6	6-62006-5116	6-62006-5140	6-62006-5115	6-62006-5141	17	6	0.013	4.81	1.59	0.88	0.94	1.63
10	6-62010-5116	6-62010-5140	6-62010-5115	6-62010-5141	17	6	0.013	4.81	1.59	0.88	0.94	1.63
15	6-63015-5116	6-63015-5140	6-63015-5115	6-63015-5141	18	6	0.019	5.13	1.90	1.19	1.25	1.94
20	6-63020-5116	6-63020-5140	6-63020-5115	6-63020-5141	18	6	0.019	5.13	1.90	1.19	1.25	1.94
25	6-64025-5116	6-64025-5140	6-64025-5115	6-64025-5141	19	6	0.022	5.44	2.05	1.34	1.56	2.25

## Double C Face

Construction: Aluminum with Stainless Steel Window Caps or Stainless Steel Instructions and Parts Manual: Aluminum- BK4646 Stainless Steel- BK4651



Torque lb-ft	Model # Aluminum / Stainless Steel Window Caps	Wt. Lbs.	Model # Stainless Steel	Wt. Lbs.	Thermal Capacity Hps/min	Inertia Wk <sup>2</sup> lb-ft <sup>2</sup>	Dimensions in inches				
							C	X		AC	
								1-Pc Shaft	2-Pc Shaft	Aluminum	Stainless Steel
1.5	6-61001-5155	11	6-61001-5145	20	6	0.006	4.94	0.81	0.88	0.59	0.63
3	6-61003-5155	11	6-61003-5145	20	6	0.006					
6	6-62006-5155	12	6-62006-5145	21	6	0.010					
10	6-62010-5155	12	6-62010-5145	21	6	0.010	5.31	1.19	-	0.87	0.94
15	6-63015-5155	13	6-63015-5145	23	6	0.014					
20	6-63020-5155	13	6-63020-5145	23	6	0.014					

# 70 Series Dimensions NEMA Frame sizes 182/184TC-254/256TC

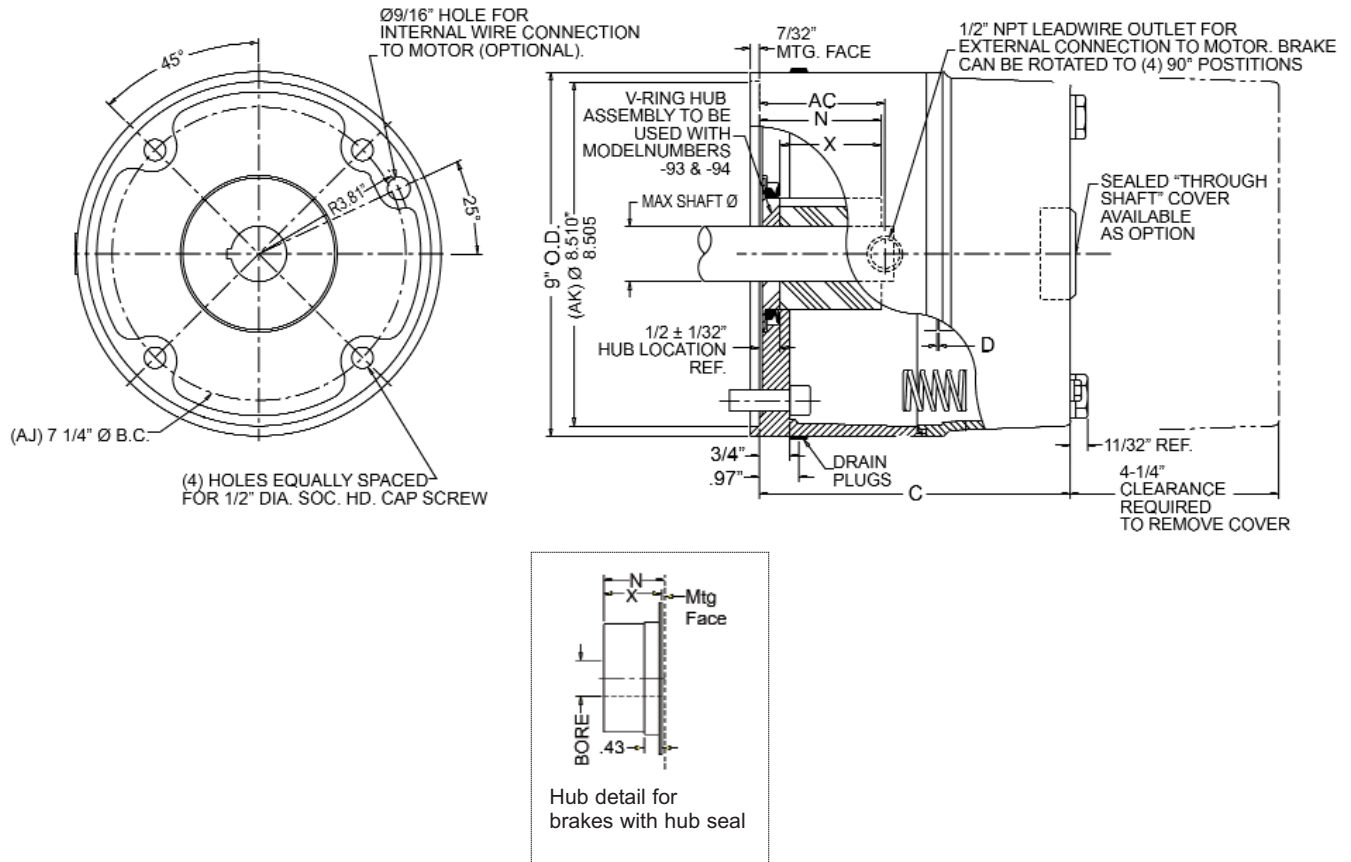
## Standard 2 Post Design & Heavy Duty 4 Post

### End Mount

#### Specifications

Construction: Cast Iron

Instructions and Parts Manual: BK4629



Torque lb-ft	2 POST Model #		Heavy Duty 4 POST Model #		Wt. Lbs.	Thermal Capacity HPS/Min	Inertia Wk <sup>2</sup> lb-ft <sup>2</sup>		Dimensions in inches			
	With Hub Seal		Without Hub Seal				2 POST	4 POST	C	N	X Hub Length (without hub seal)	AC
	Model #	Model #	Model #	Model #								
10	6-71010-93	6-71010-94	6-71010-91	6-71010-92	45	10	0.028	0.036	5.75	1.50	1.00	1.25
15	6-71015-93	6-71015-94	6-71015-91	6-71015-92	45	10	0.028	0.036	5.75	1.50	1.00	1.25
25	6-72025-93	6-72025-94	6-72025-91	6-72025-92	49	11	0.051	0.059	6.37	2.00	1.50	1.88
35	6-72035-93	6-72035-94	6-72035-91	6-72035-92	49	11	0.051	0.059	6.37	2.00	1.50	1.88
50	6-73050-93	6-73050-94	6-73050-91	6-73050-92	53	12	0.075	0.083	7.00	2.50	2.00	2.70
75	6-74075-93	6-74075-94	6-74075-91	6-74075-92	58	13	0.099	0.107	7.62	3.00	2.50	3.13

# 70 Series Dimensions

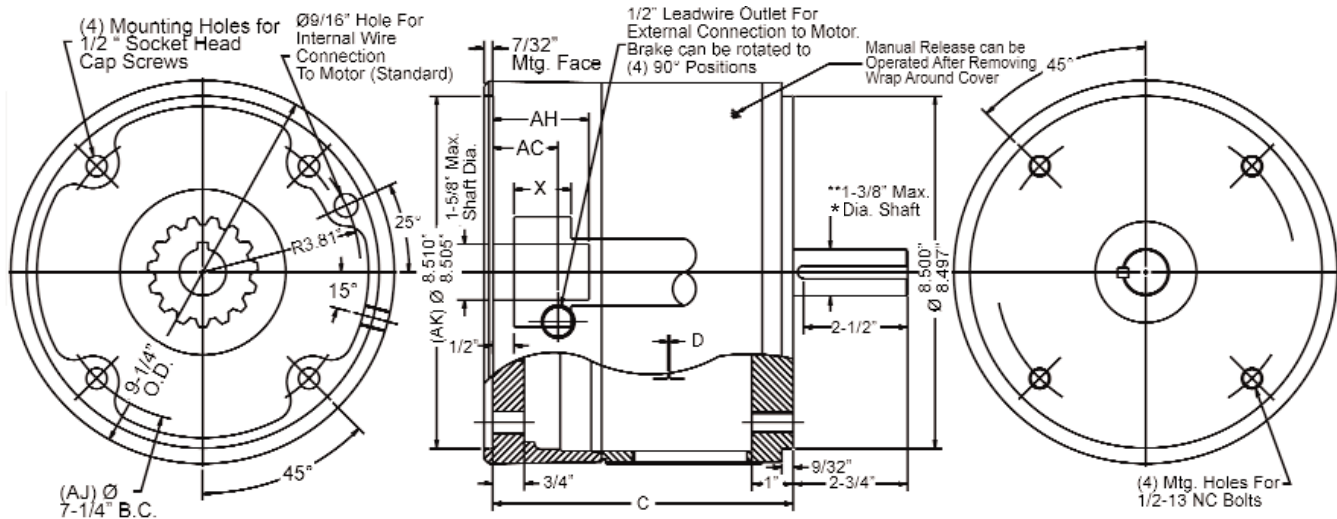
NEMA Frame sizes 182/184TC-254/256TC

## Standard 2 Post Design & Heavy Duty 4 Post

### Specifications

Construction: Cast Iron Bracket, Aluminum Housing

### Double C Face



Torque lb-ft	Double C Face Model #	Wt. Lbs.	Thermal Capacity HPS/Min	Inertia WK <sup>2</sup> lb-ft <sup>2</sup>	Dimensions in inches			
					C	AH	X	AC
10	6-71010-105	45	10	0.069	6.84	1.81*	0.75	1.19
15	6-71015-105	45	10	0.069	6.84	1.81*	0.75	1.19
25	6-72025-105	49	11	0.110	7.47	2.44*	1.38	1.63
25	6-73025-105	53	12	0.150	8.09	3.13	2.00	2.25
35	6-72035-105	49	11	0.110	7.47	2.44*	1.38	1.63
35	6-73035-105	53	12	0.150	8.09	3.13	2.00	2.25
50	6-73050-105	53	12	0.150	8.09	3.13	2.00	2.25
75	6-74075-105	57	13	0.190	8.42	3.25*	2.63	2.88

\*For 10 or 15 lb-ft brake with 1-3/8" bore, the motor shaft may need to be modified. See dimension "AH".  
 For 25 or 35 lb-ft brake with 1-3/8" bore, use the 3-disc version.  
 For brakes with 1-5/8" bore, motor shaft must be modified.  
 Maximum shaft length shown as dimension "AH".

For brake options & ordering information, please contact factory.